



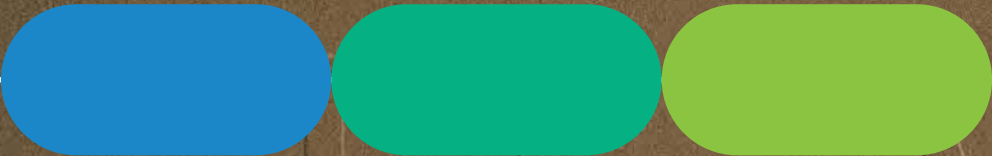
BINGHATTI HAVEN



AFS
REAL ESTATE
STAY AHEAD, INVEST SMART



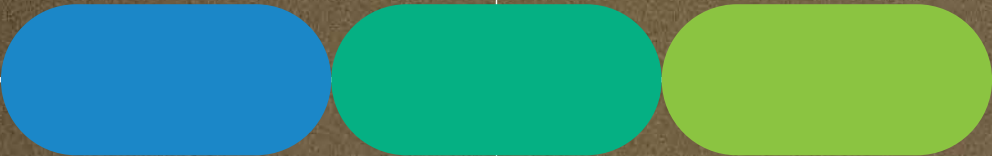
db
DUBRICKS
POSSIBILITIES ARE LIMITLESS





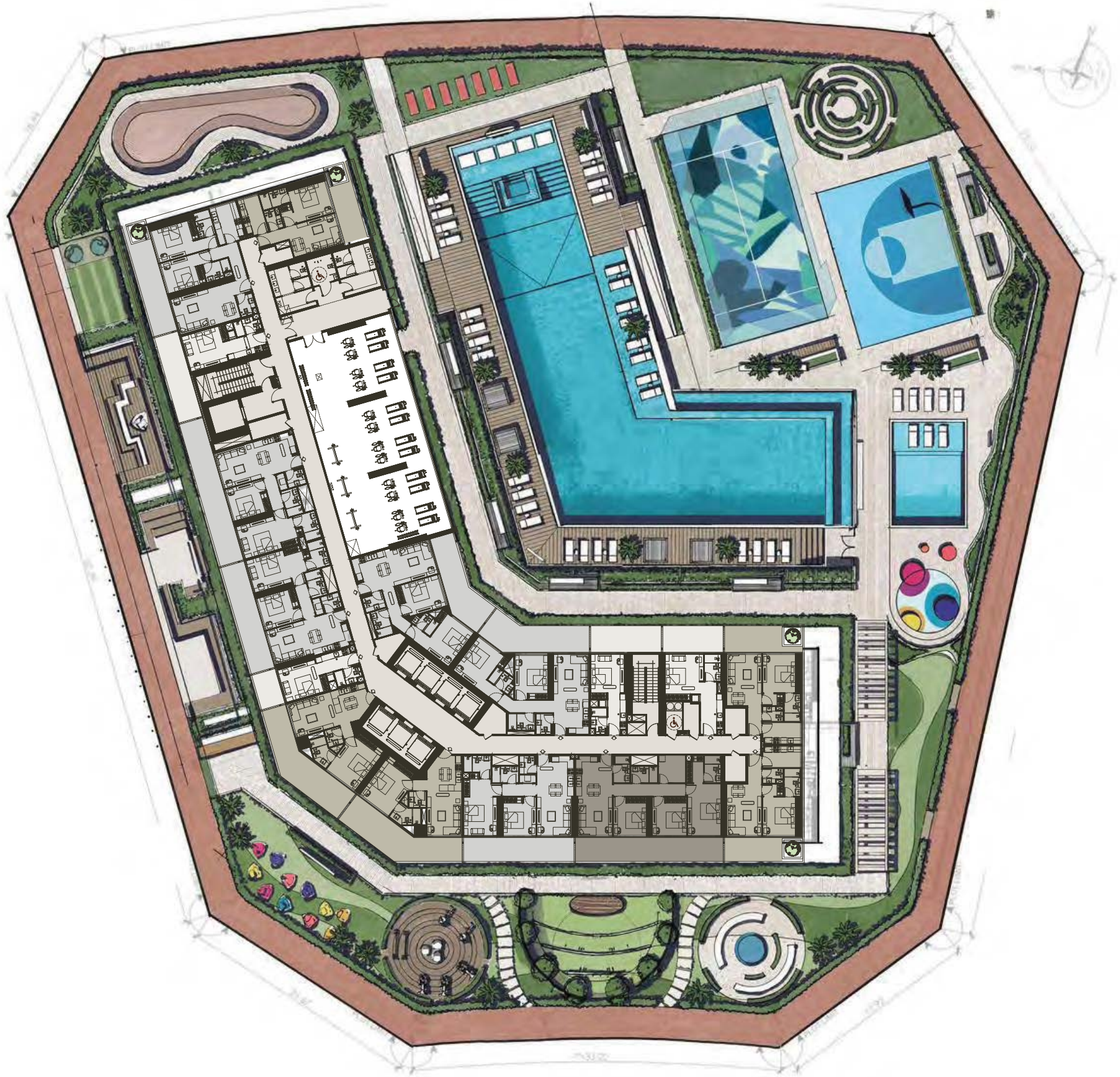
FLOOR PLAN

Discover a range of thoughtfully designed floor plans to suit your individual needs and lifestyle. From studios to expansive family residences, Haven offers a space for everyone.



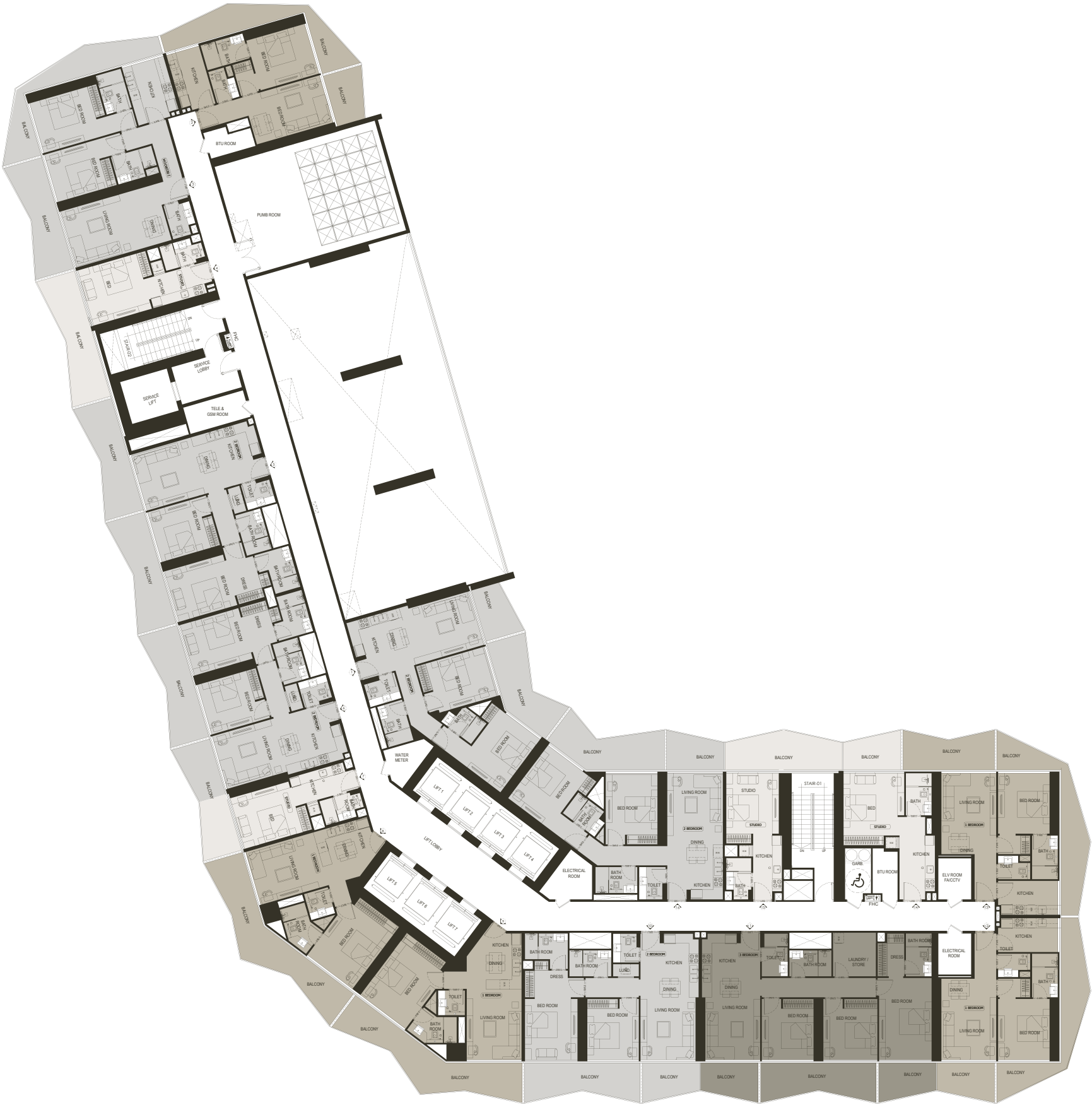
TYPICAL FLOOR PLAN
1ST FLOOR

| STUDIO | |
|------------------------------|-----------------|
| AVERAGE AREA WITHOUT BALCONY | 300 - 380 ft² |
| AVERAGE AREA WITH BALCONY | 385 - 551 ft² |
| 1 BEDROOM | |
| AVERAGE AREA WITHOUT BALCONY | 585 - 658 ft² |
| AVERAGE AREA WITH BALCONY | 774 - 975 ft² |
| 2 BEDROOM | |
| AVERAGE AREA WITHOUT BALCONY | 903 - 988 ft² |
| AVERAGE AREA WITH BALCONY | 1137 -1378 ft² |
| 3 BEDROOM | |
| AVERAGE AREA WITHOUT BALCONY | 1218 ft² |
| AVERAGE AREA WITH BALCONY | 1557 - 1609 ft² |



TYPICAL FLOOR PLAN
2ND FLOOR

| STUDIO | |
|------------------------------|-----------------|
| AVERAGE AREA WITHOUT BALCONY | 300 - 380 ft² |
| AVERAGE AREA WITH BALCONY | 385 - 551 ft² |
| 1 BEDROOM | |
| AVERAGE AREA WITHOUT BALCONY | 585 - 658 ft² |
| AVERAGE AREA WITH BALCONY | 774 - 975 ft² |
| 2 BEDROOM | |
| AVERAGE AREA WITHOUT BALCONY | 903 - 988 ft² |
| AVERAGE AREA WITH BALCONY | 1137 -1378 ft² |
| 3 BEDROOM | |
| AVERAGE AREA WITHOUT BALCONY | 1218 ft² |
| AVERAGE AREA WITH BALCONY | 1557 - 1609 ft² |

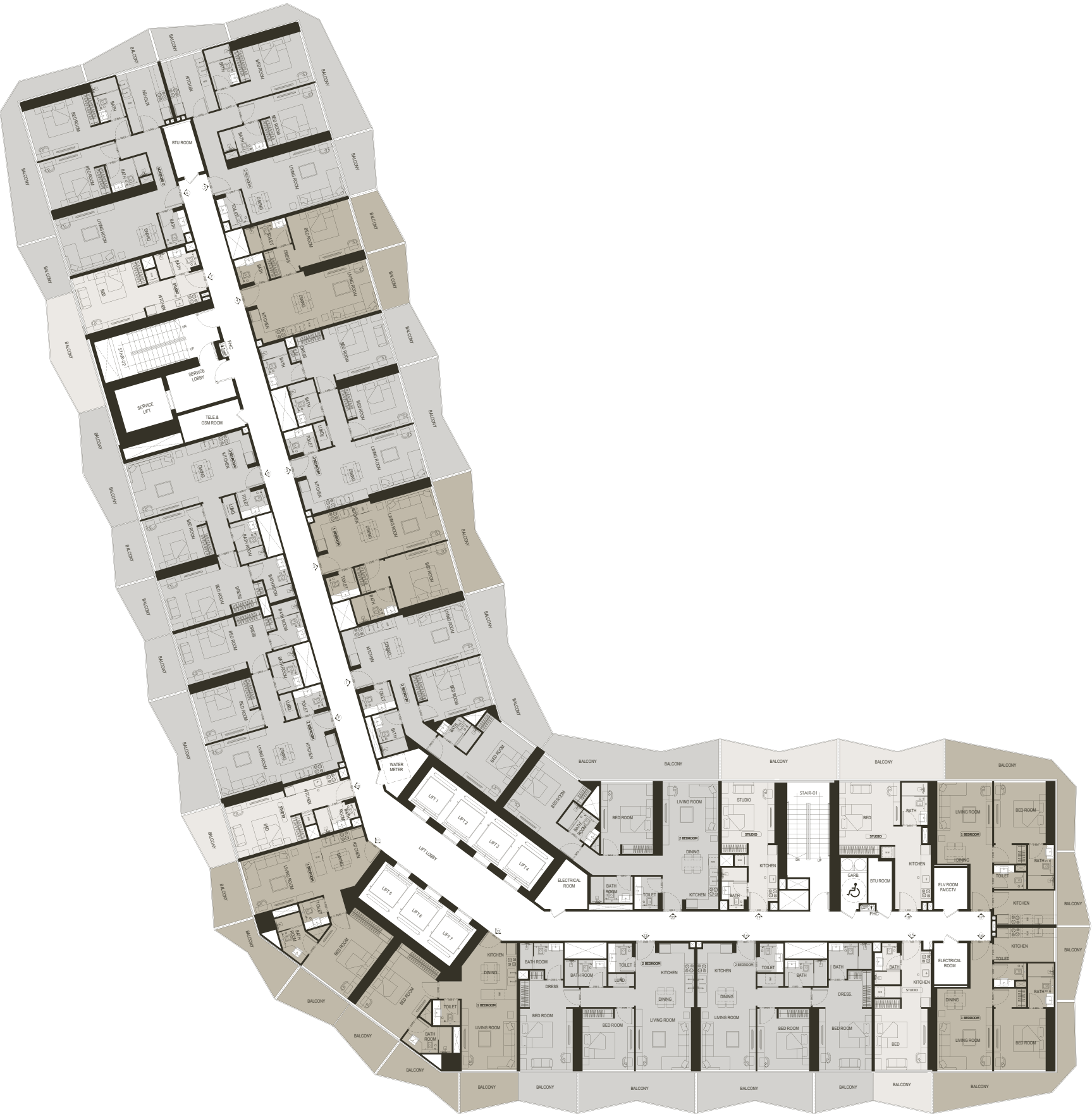


TYPICAL FLOOR PLAN

3RD - 15TH FLOOR

3 | 5 | 7 | 9 | 11 | 13 | 15

| STUDIO | |
|------------------------------|-----------------|
| AVERAGE AREA WITHOUT BALCONY | 300 - 380 ft² |
| AVERAGE AREA WITH BALCONY | 385 - 551 ft² |
| 1 BEDROOM | |
| AVERAGE AREA WITHOUT BALCONY | 585 - 658 ft² |
| AVERAGE AREA WITH BALCONY | 774 - 975 ft² |
| 2 BEDROOM | |
| AVERAGE AREA WITHOUT BALCONY | 903 - 988 ft² |
| AVERAGE AREA WITH BALCONY | 1137 -1378 ft² |
| 3 BEDROOM | |
| AVERAGE AREA WITHOUT BALCONY | 1218 ft² |
| AVERAGE AREA WITH BALCONY | 1557 - 1609 ft² |

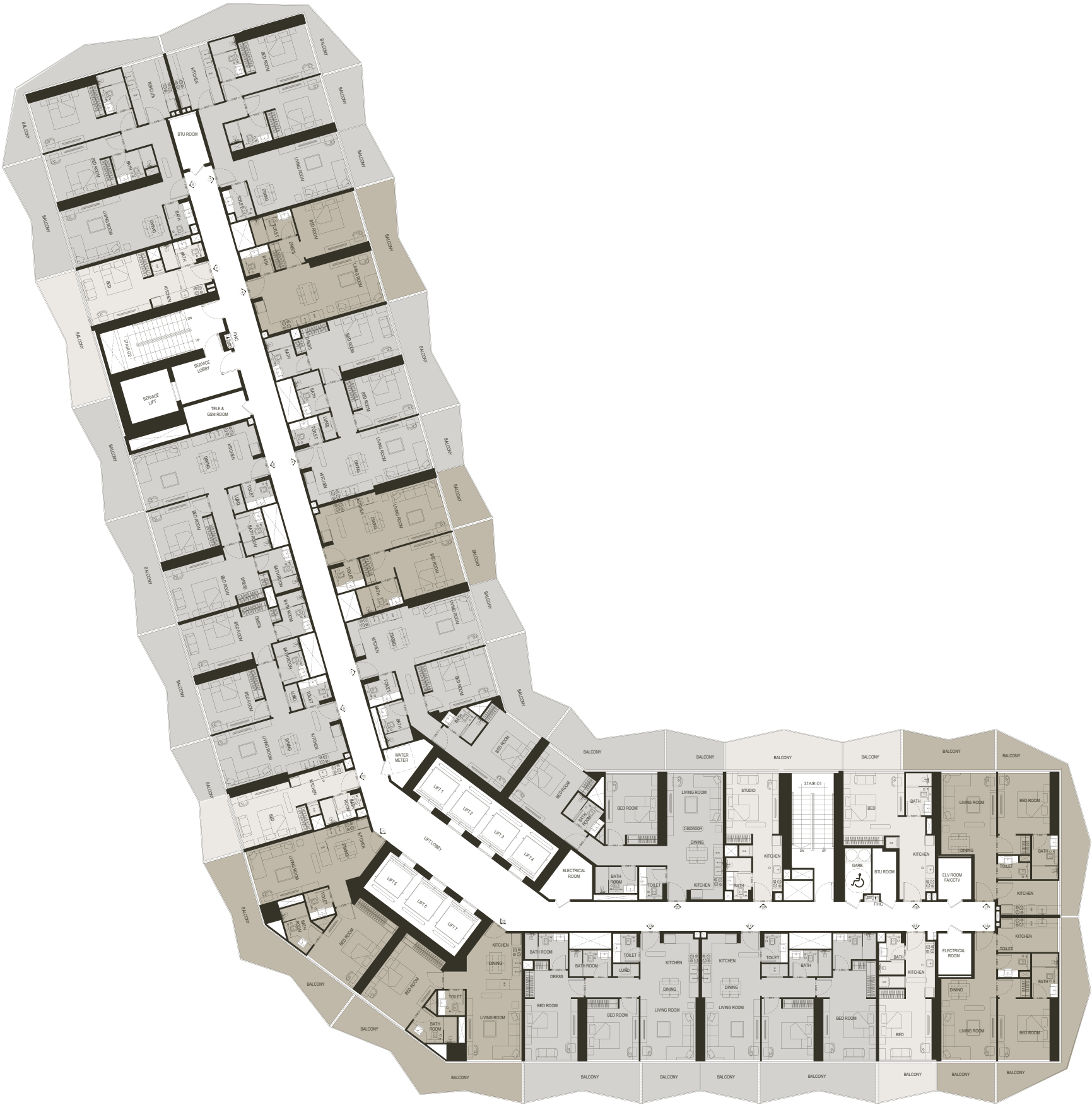


TYPICAL FLOOR PLAN

4TH - 14TH FLOOR

4 | 6 | 8 | 10 |12 | 14

| STUDIO | |
|------------------------------|-----------------|
| AVERAGE AREA WITHOUT BALCONY | 300 - 380 ft² |
| AVERAGE AREA WITH BALCONY | 385 - 551 ft² |
| 1 BEDROOM | |
| AVERAGE AREA WITHOUT BALCONY | 585 - 658 ft² |
| AVERAGE AREA WITH BALCONY | 774 - 975 ft² |
| 2 BEDROOM | |
| AVERAGE AREA WITHOUT BALCONY | 903 - 988 ft² |
| AVERAGE AREA WITH BALCONY | 1137 -1378 ft² |
| 3 BEDROOM | |
| AVERAGE AREA WITHOUT BALCONY | 1218 ft² |
| AVERAGE AREA WITH BALCONY | 1557 - 1609 ft² |

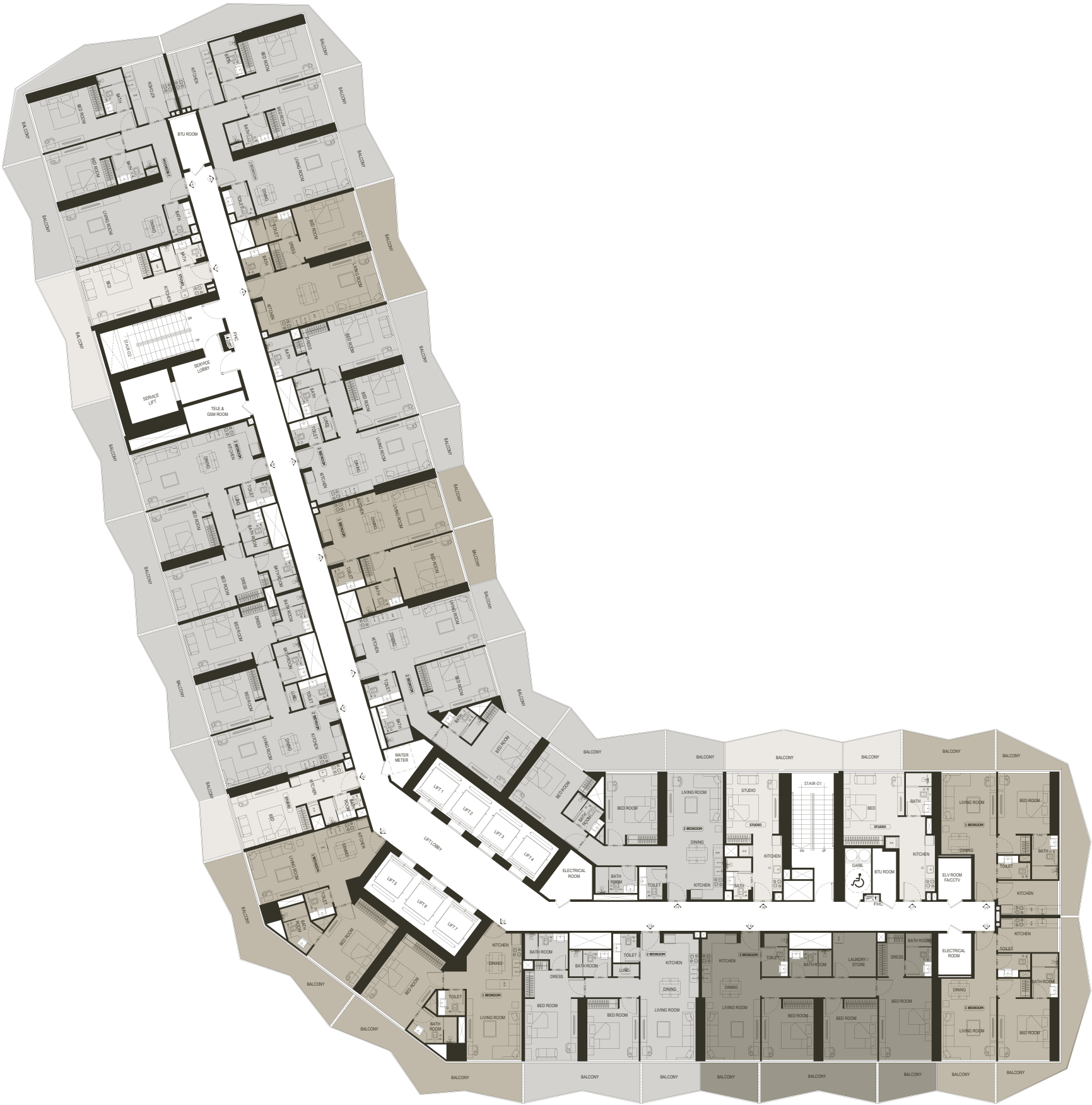


TYPICAL FLOOR PLAN

16TH - 26TH FLOOR

16 | 18 | 20 | 22 | 24 | 26

| STUDIO | |
|------------------------------|-----------------|
| AVERAGE AREA WITHOUT BALCONY | 300 - 380 ft² |
| AVERAGE AREA WITH BALCONY | 385 - 551 ft² |
| 1 BEDROOM | |
| AVERAGE AREA WITHOUT BALCONY | 585 - 658 ft² |
| AVERAGE AREA WITH BALCONY | 774 - 975 ft² |
| 2 BEDROOM | |
| AVERAGE AREA WITHOUT BALCONY | 903 - 988 ft² |
| AVERAGE AREA WITH BALCONY | 1137 -1378 ft² |
| 3 BEDROOM | |
| AVERAGE AREA WITHOUT BALCONY | 1218 ft² |
| AVERAGE AREA WITH BALCONY | 1557 - 1609 ft² |



FLOOR PLAN

TYPICAL FLOOR PLAN 17TH - 25TH FLOOR

17 | 19 | 21 | 23 | 25

STUDIO

| | |
|------------------------------|---------------------------|
| AVERAGE AREA WITHOUT BALCONY | 300 - 380 ft ² |
| AVERAGE AREA WITH BALCONY | 385 - 551 ft ² |

1 BEDROOM

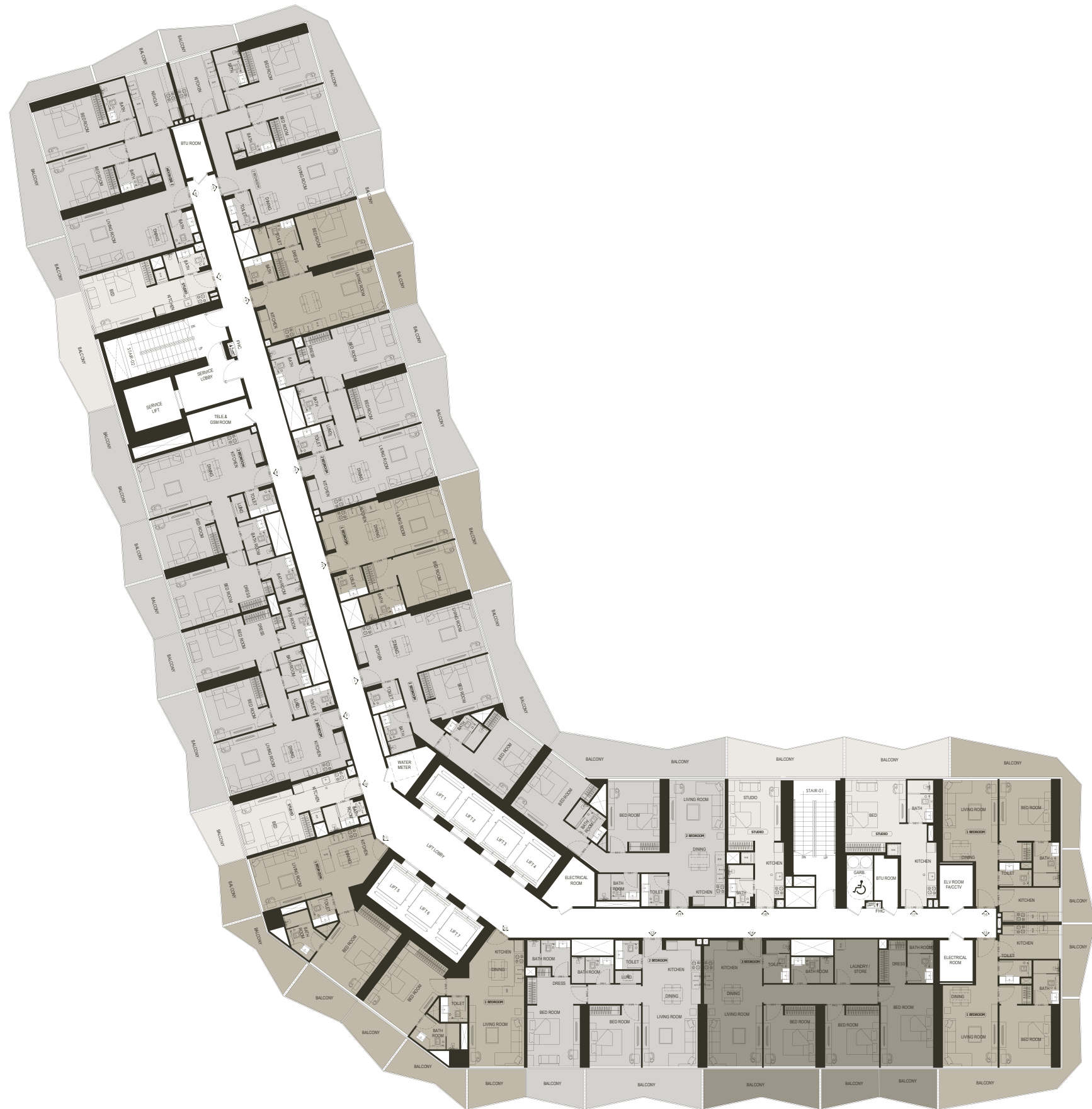
| | |
|------------------------------|---------------------------|
| AVERAGE AREA WITHOUT BALCONY | 585 - 658 ft ² |
| AVERAGE AREA WITH BALCONY | 774 - 975 ft ² |

2 BEDROOM

| | |
|------------------------------|----------------|
| AVERAGE AREA WITHOUT BALCONY | 903 - 988 ft² |
| AVERAGE AREA WITH BALCONY | 1137 -1378 ft² |

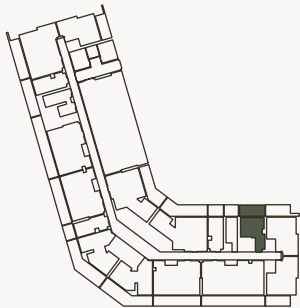
3 BEDROOM

| | |
|------------------------------|-----------------------------|
| AVERAGE AREA WITHOUT BALCONY | 1218 ft ² |
| AVERAGE AREA WITH BALCONY | 1557 - 1609 ft ² |



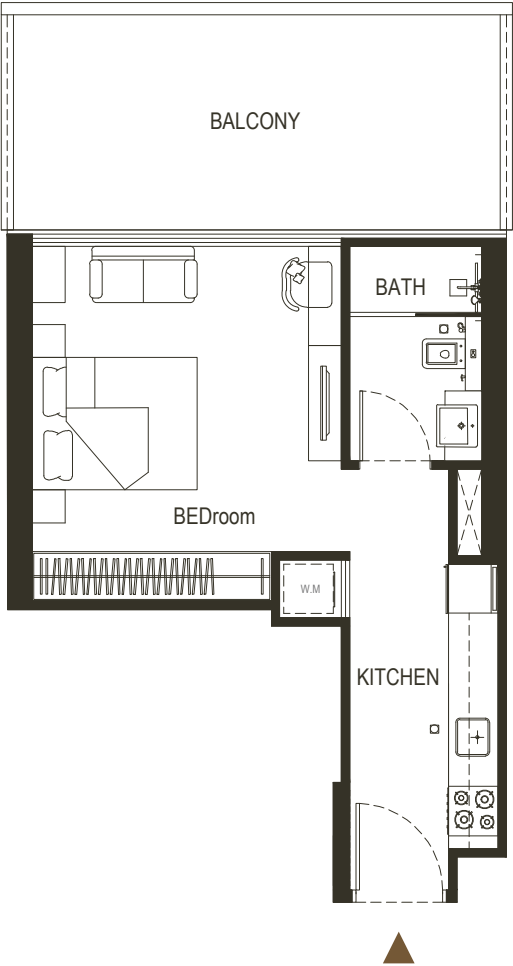
STUDIO

TYPE - 1



| AREA | SQ.M | SQ.FT |
|-----------------|----------|------------|
| | | |
| SUITE AREA | 35.35 m² | 380 ft² |
| BALCONY AREA | 26.21 m² | 282.12 ft² |
| TOTAL UNIT AREA | 61.56 m² | 662.62 ft² |

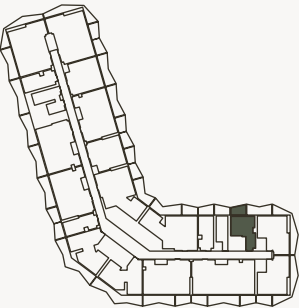
| FLAT DESIGN COMPONENTS | | |
|------------------------|-------|--|
| | | |
| BATH | 4 m² | |
| STUDIO | 17 m² | |
| LAUNDRY | 1 m² | |
| KITCHEN | 7 m² | |



Disclaimer: 1. All stated dimensions and services whether in relation to the building, common areas or individual units are subject to government and local authority approvals. Final dimensions and services will be stated in your sales and purchase agreement 2. All room dimensions are measured to structural elements and exclude wall finishes and construction tolerances. 3. All dimensions have been provided by our consultant architects. 4. All materials, dimensions and drawings are approximate. Information is subject to change without notice. 5. Actual suite area may vary from the stated area. Drawings are not to scale. The Developer reserves the right to make any revisions whatsoever including for aesthetic purposes.

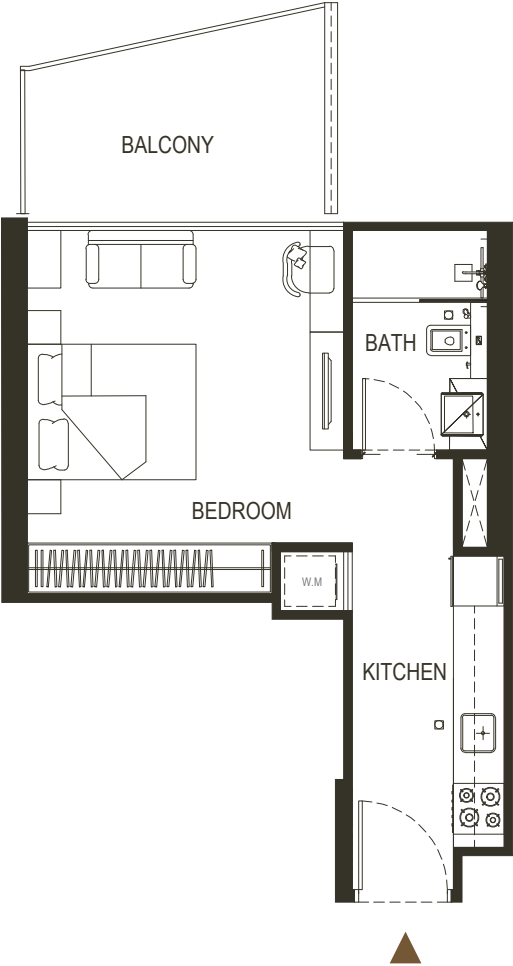
STUDIO

TYPE - 2



| AREA | SQ.M | SQ.FT |
|-----------------|----------|------------|
| | | |
| SUITE AREA | 35.18 m² | 378.67 ft² |
| BALCONY AREA | 16.03 m² | 172.55 ft² |
| TOTAL UNIT AREA | 51.21 m² | 551.21 ft² |

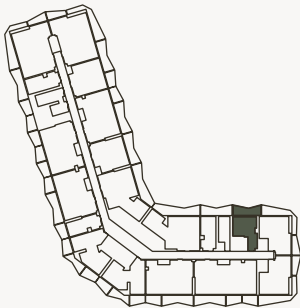
| FLAT DESIGN COMPONENTS | | |
|------------------------|-------|--|
| | | |
| BATH | 4 m² | |
| STUDIO | 17 m² | |
| LAUNDRY | 1 m² | |
| KITCHEN | 7 m² | |



6. Calculation of suite area is measured as the area bounded by the centre line of demising or partition walls separating one unit from another unit, the exterior face of all exterior walls, and the exterior face of the corridor wall enclosing the adjoining unit. 7. Calculation of balcony area is measured as the area bounded by the centre line of demising or partition walls separating one unit from another unit, the outmost face of the enclosing guard and the external face of the adjoining balcony. 8. The units are measured at typical floor in the building. Columns may vary in size depending on the floor level. 9. For each unit type, unit sizes and details might be different and your sales and purchase agreement will contain the actual size of each specific unit.

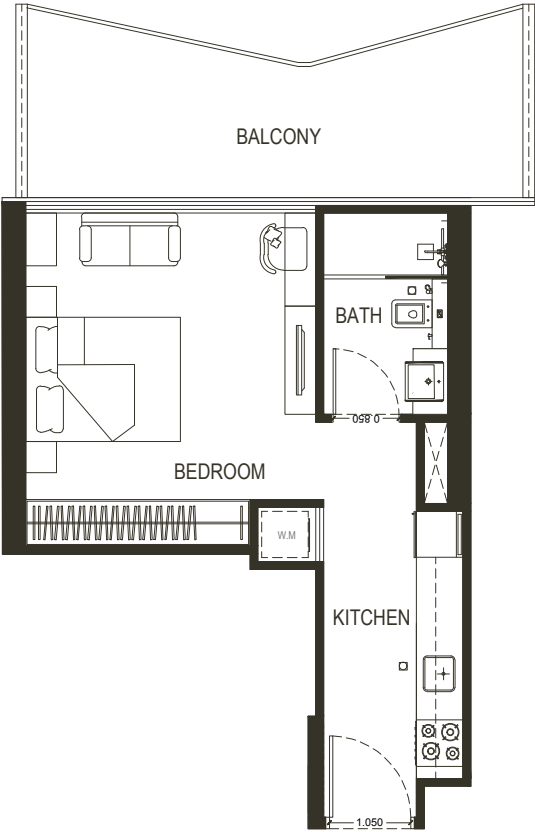
STUDIO

TYPE - 3



| AREA | SQ.M | SQ.FT |
|-----------------|----------|------------|
| | | |
| SUITE AREA | 35.24 m² | 379.32 ft² |
| BALCONY AREA | 14.47 m² | 155.75 ft² |
| TOTAL UNIT AREA | 49.71 m² | 535.07 ft² |

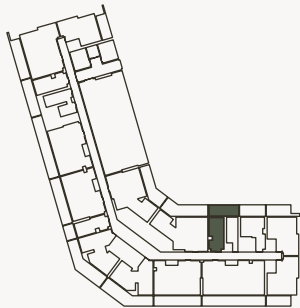
| FLAT DESIGN COMPONENTS | | |
|------------------------|-------|--|
| | | |
| BATH | 4 m² | |
| STUDIO | 17 m² | |
| LAUNDRY | 1 m² | |
| KITCHEN | 7 m² | |



Disclaimer: 1. All stated dimensions and services whether in relation to the building, common areas or individual units are subject to government and local authority approvals. Final dimensions and services will be stated in your sales and purchase agreement 2. All room dimensions are measured to structural elements and exclude wall finishes and construction tolerances. 3. All dimensions have been provided by our consultant architects. 4. All materials, dimensions and drawings are approximate. Information is subject to change without notice. 5. Actual suite area may vary from the stated area. Drawings are not to scale. The Developer reserves the right to make any revisions whatsoever including for aesthetic purposes.

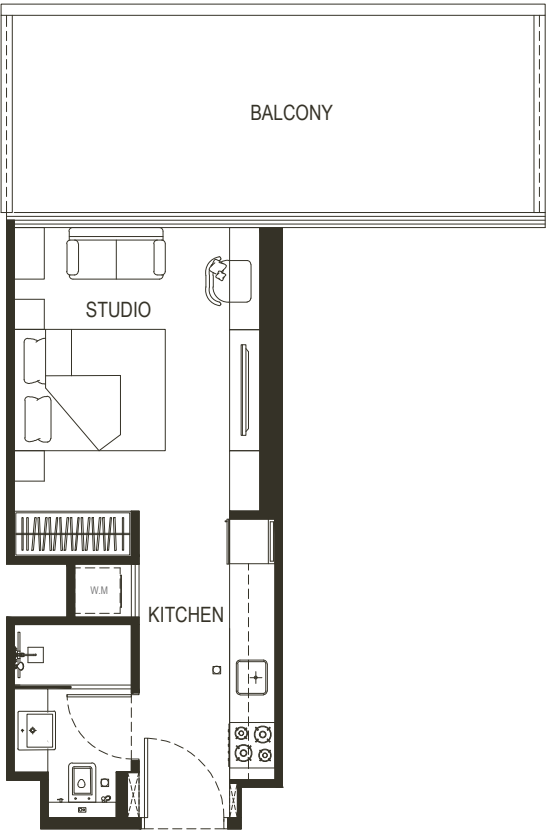
STUDIO

TYPE - 4



| AREA | SQ.M | SQ.FT |
|-----------------|----------|------------|
| | | |
| SUITE AREA | 29.05 m² | 312.69 ft² |
| BALCONY AREA | 10.07 m² | 108.39 ft² |
| TOTAL UNIT AREA | 39.12 m² | 421.08 ft² |

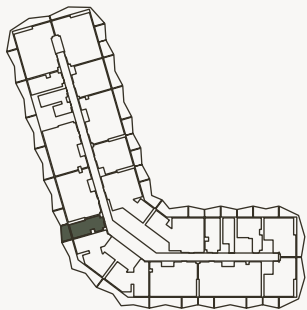
| FLAT DESIGN COMPONENTS | | |
|------------------------|-------|--|
| | | |
| BATH | 4 m² | |
| STUDIO | 13 m² | |
| LAUNDRY | 1 m² | |
| KITCHEN | 7 m² | |



6. Calculation of suite area is measured as the area bounded by the centre line of demising or partition walls separating one unit from another unit, the exterior face of all exterior walls, and the exterior face of the corridor wall enclosing the adjoining unit. 7. Calculation of balcony area is measured as the area bounded by the centre line of demising or partition walls separating one unit from another unit, the outmost face of the enclosing guard and the external face of the adjoining balcony. 8. The units are measured at typical floor in the building. Columns may vary in size depending on the floor level. 9. For each unit type, unit sizes and details might be different and your sales and purchase agreement will contain the actual size of each specific unit.

STUDIO

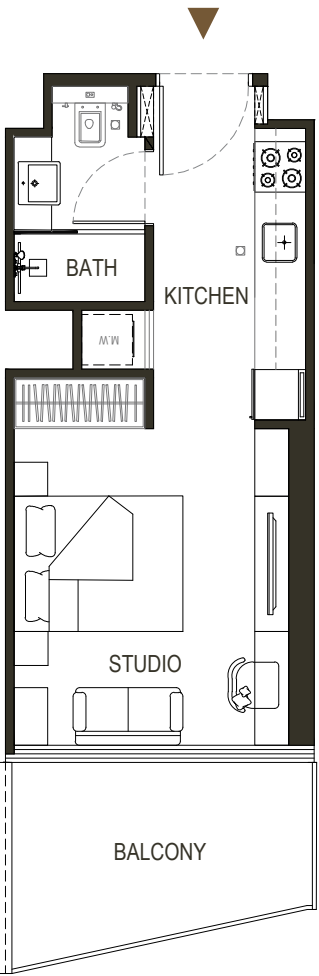
TYPE - 5



| AREA | SQ.M | SQ.FT |
|-----------------|----------|------------|
| SUITE AREA | 27.91 m² | 300.42 ft² |
| BALCONY AREA | 7.93 m² | 85.36 ft² |
| TOTAL UNIT AREA | 35.84 m² | 385.78 ft² |

| FLAT DESIGN COMPONENTS | | |
|------------------------|-------|--|
| BATH | 4 m² | |
| STUDIO | 13 m² | |
| LAUNDRY | 1 m² | |
| KITCHEN | 7 m² | |

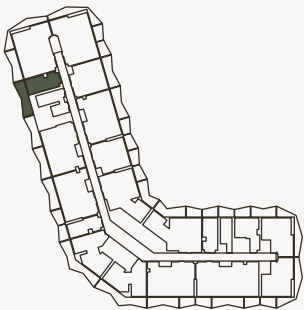
Disclaimer: 1. All stated dimensions and services whether in relation to the building, common areas or individual units are subject to government and local authority approvals. Final dimensions and services will be stated in your sales and purchase agreement 2. All room dimensions are measured to structural elements and exclude wall finishes and construction tolerances. 3. All dimensions have been provided by our consultant architects. 4. All materials, dimensions and drawings are approximate. Information is subject to change without notice. 5. Actual suite area may vary from the stated area. Drawings are not to scale. The Developer reserves the right to make any revisions whatsoever including for aesthetic purposes.



6. Calculation of suite area is measured as the area bounded by the centre line of demising or partition walls separating one unit from another unit, the exterior face of all exterior walls, and the exterior face of the corridor wall enclosing the adjoining unit. 7. Calculation of balcony area is measured as the area bounded by the centre line of demising or partition walls separating one unit from another unit, the outmost face of the enclosing guard and the external face of the adjoining balcony. 8. The units are measured at typical floor in the building. Columns may vary in size depending on the floor level. 9. For each unit type, unit sizes and details might be different and your sales and purchase agreement will contain the actual size of each specific unit.

STUDIO

TYPE - 6

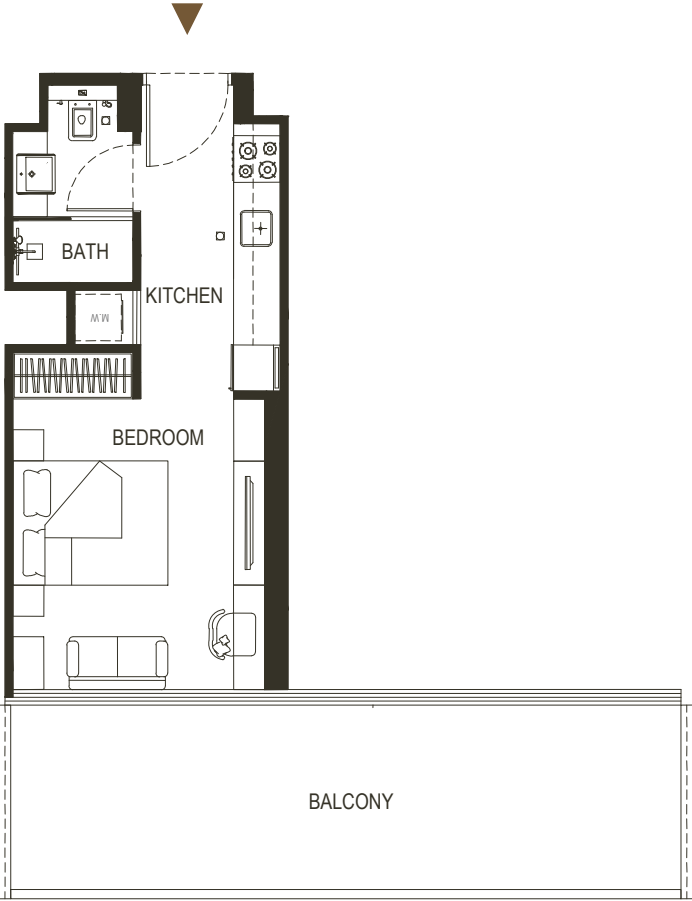
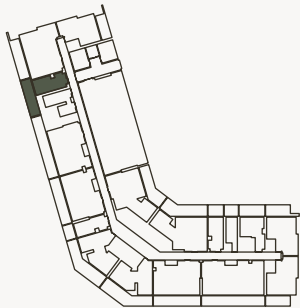


| AREA | SQ.M | SQ.FT |
|-----------------|----------|------------|
| SUITE AREA | 30.21 m² | 325.17 ft² |
| BALCONY AREA | 19.01 m² | 204.62 ft² |
| TOTAL UNIT AREA | 49.22 m² | 529.79 ft² |

| FLAT DESIGN COMPONENTS | | |
|------------------------|-------|--|
| BATH | 4 m² | |
| STUDIO | 13 m² | |
| LAUNDRY | 1 m² | |
| KITCHEN | 7 m² | |

STUDIO

TYPE - 7



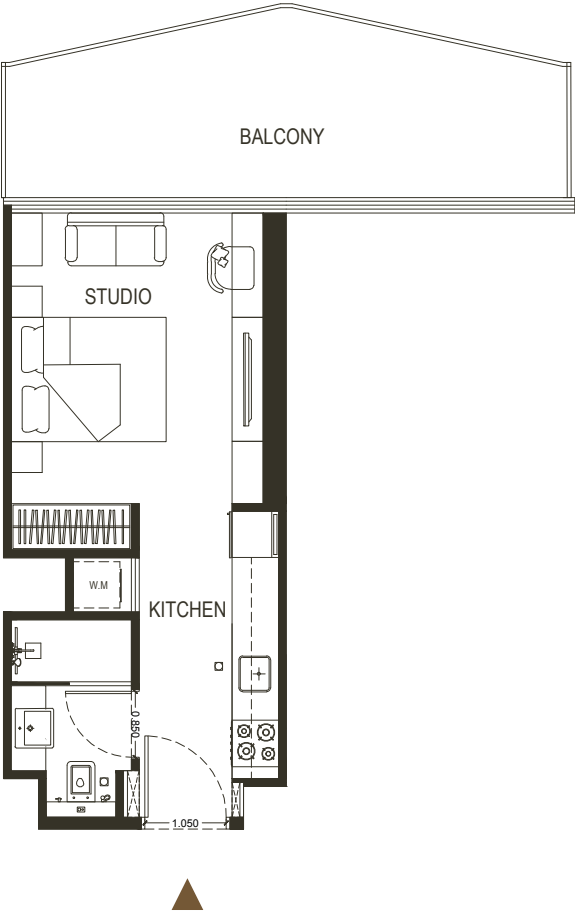
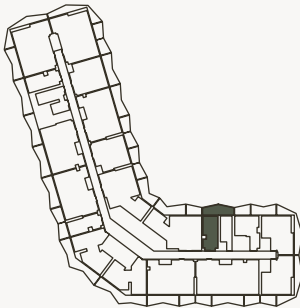
| AREA | SQ.M | SQ.FT |
|-----------------|----------------------|------------------------|
| SUITE AREA | 30.21 m ² | 325.17 ft ² |
| BALCONY AREA | 18.12 m ² | 195.04 ft ² |
| TOTAL UNIT AREA | 48.33 m ² | 520.21 ft ² |

| FLAT DESIGN COMPONENTS | | |
|------------------------|-------------------|--|
| BATH | 4 m ² | |
| STUDIO | 13 m ² | |
| LAUNDRY | 1 m ² | |
| KITCHEN | 7 m ² | |

Disclaimer: 1. All stated dimensions and services whether in relation to the building, common areas or individual units are subject to government and local authority approvals. Final dimensions and services will be stated in your sales and purchase agreement 2. All room dimensions are measured to structural elements and exclude wall finishes and construction tolerances. 3. All dimensions have been provided by our consultant architects. 4. All materials, dimensions and drawings are approximate. Information is subject to change without notice. 5. Actual suite area may vary from the stated area. Drawings are not to scale. The Developer reserves the right to make any revisions whatsoever including for aesthetic purposes.

STUDIO

TYPE - 8



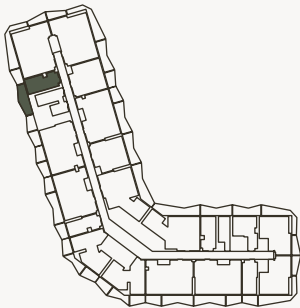
| AREA | SQ.M | SQ.FT |
|-----------------|----------------------|------------------------|
| SUITE AREA | 28.92 m ² | 311.29 ft ² |
| BALCONY AREA | 8.02 m ² | 86.32 ft ² |
| TOTAL UNIT AREA | 36.94m ² | 397.61 ft ² |

| FLAT DESIGN COMPONENTS | | |
|------------------------|-------------------|--|
| BATH | 4 m ² | |
| STUDIO | 13 m ² | |
| LAUNDRY | 1 m ² | |
| KITCHEN | 7 m ² | |

6. Calculation of suite area is measured as the area bounded by the centre line of demising or partition walls separating one unit from another unit, the exterior face of all exterior walls, and the exterior face of the corridor wall enclosing the adjoining unit. 7. Calculation of balcony area is measured as the area bounded by the centre line of demising or partition walls separating one unit from another unit, the outmost face of the enclosing guard and the external face of the adjoining balcony. 8. The units are measured at typical floor in the building. Columns may vary in size depending on the floor level. 9. For each unit type, unit sizes and details might be different and your sales and purchase agreement will contain the actual size of each specific unit.

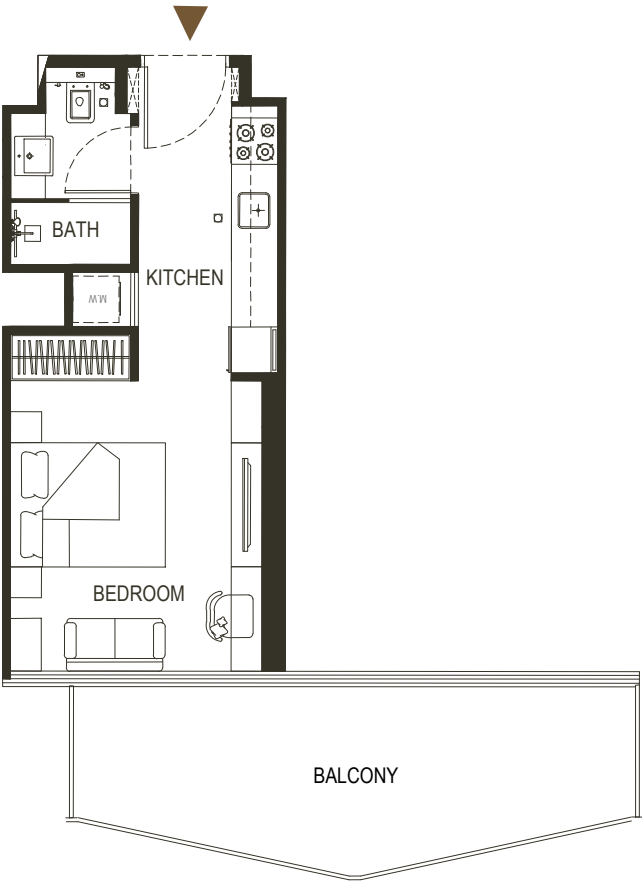
STUDIO

TYPE - 9



| AREA | SQ.M | SQ.FT |
|-----------------|----------|------------|
| SUITE AREA | 30.21 m² | 325.17 ft² |
| BALCONY AREA | 18.64 m² | 200.63 ft² |
| TOTAL UNIT AREA | 48.85 m² | 525.81 ft² |

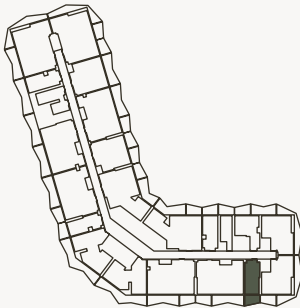
| FLAT DESIGN COMPONENTS | | |
|------------------------|-------|--|
| BATH | 4 m² | |
| STUDIO | 13 m² | |
| LAUNDRY | 1 m² | |
| KITCHEN | 7 m² | |



Disclaimer: 1. All stated dimensions and services whether in relation to the building, common areas or individual units are subject to government and local authority approvals. Final dimensions and services will be stated in your sales and purchase agreement 2. All room dimensions are measured to structural elements and exclude wall finishes and construction tolerances. 3. All dimensions have been provided by our consultant architects. 4. All materials, dimensions and drawings are approximate. Information is subject to change without notice. 5. Actual suite area may vary from the stated area. Drawings are not to scale. The Developer reserves the right to make any revisions whatsoever including for aesthetic purposes.

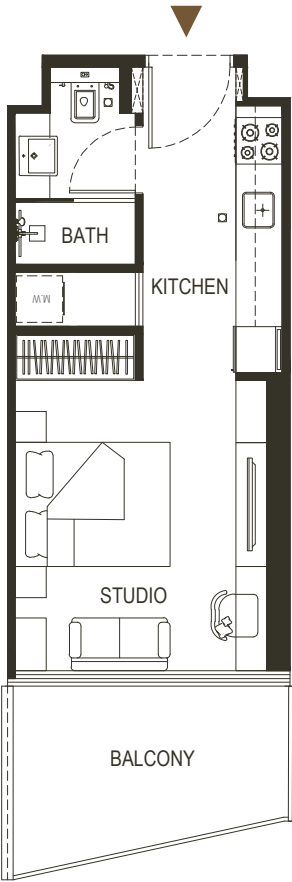
STUDIO

TYPE - 10



| AREA | SQ.M | SQ.FT |
|-----------------|----------|------------|
| SUITE AREA | 28.82 m² | 310.21 ft² |
| BALCONY AREA | 7.93 m² | 85.35 ft² |
| TOTAL UNIT AREA | 36.75 m² | 395.57 ft² |

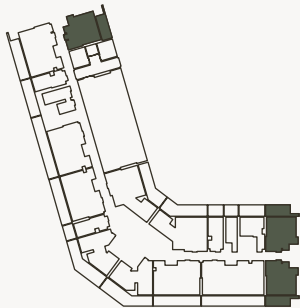
| FLAT DESIGN COMPONENTS | | |
|------------------------|-------|--|
| BATH | 4 m² | |
| STUDIO | 13 m² | |
| LAUNDRY | 1 m² | |
| KITCHEN | 7 m² | |



6. Calculation of suite area is measured as the area bounded by the centre line of demising or partition walls separating one unit from another unit, the exterior face of all exterior walls, and the exterior face of the corridor wall enclosing the adjoining unit. 7. Calculation of balcony area is measured as the area bounded by the centre line of demising or partition walls separating one unit from another unit, the outmost face of the enclosing guard and the external face of the adjoining balcony. 8. The units are measured at typical floor in the building. Columns may vary in size depending on the floor level. 9. For each unit type, unit sizes and details might be different and your sales and purchase agreement will contain the actual size of each specific unit.

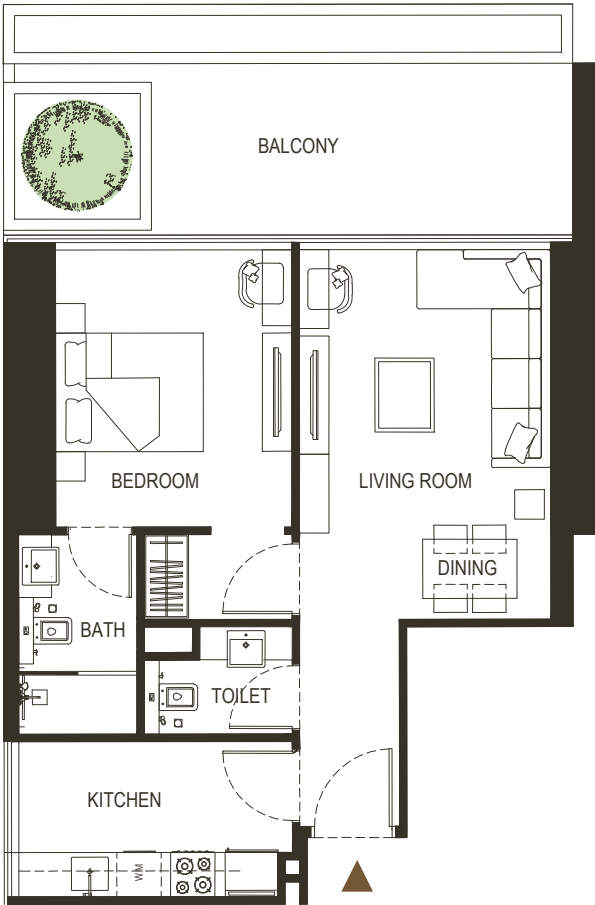
1 BEDROOM

TYPE - 1



| AREA | SQ.M | SQ.FT |
|-----------------|----------------------|------------------------|
| SUITE AREA | 56.86 m ² | 612.03 ft ² |
| BALCONY AREA | 21.30 m ² | 229.27 ft ² |
| TOTAL UNIT AREA | 78.16 m ² | 841.30 ft ² |

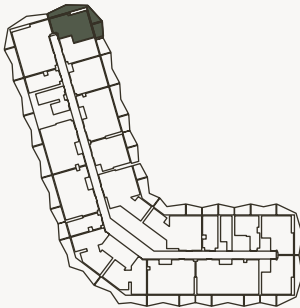
| FLAT DESIGN COMPONENTS | | |
|------------------------|-------------------|--|
| MASTER BATH | 5 m ² | |
| MASTER BEDROOM | 15 m ² | |
| LIVING | 17 m ² | |
| KITCHEN & DINING | 8 m ² | |
| W.C | 3 m ² | |
| CORRIDOR | 4 m ² | |



Disclaimer: 1. All stated dimensions and services whether in relation to the building, common areas or individual units are subject to government and local authority approvals. Final dimensions and services will be stated in your sales and purchase agreement 2. All room dimensions are measured to structural elements and exclude wall finishes and construction tolerances. 3. All dimensions have been provided by our consultant architects. 4. All materials, dimensions and drawings are approximate. Information is subject to change without notice. 5. Actual suite area may vary from the stated area. Drawings are not to scale. The Developer reserves the right to make any revisions whatsoever including for aesthetic purposes.

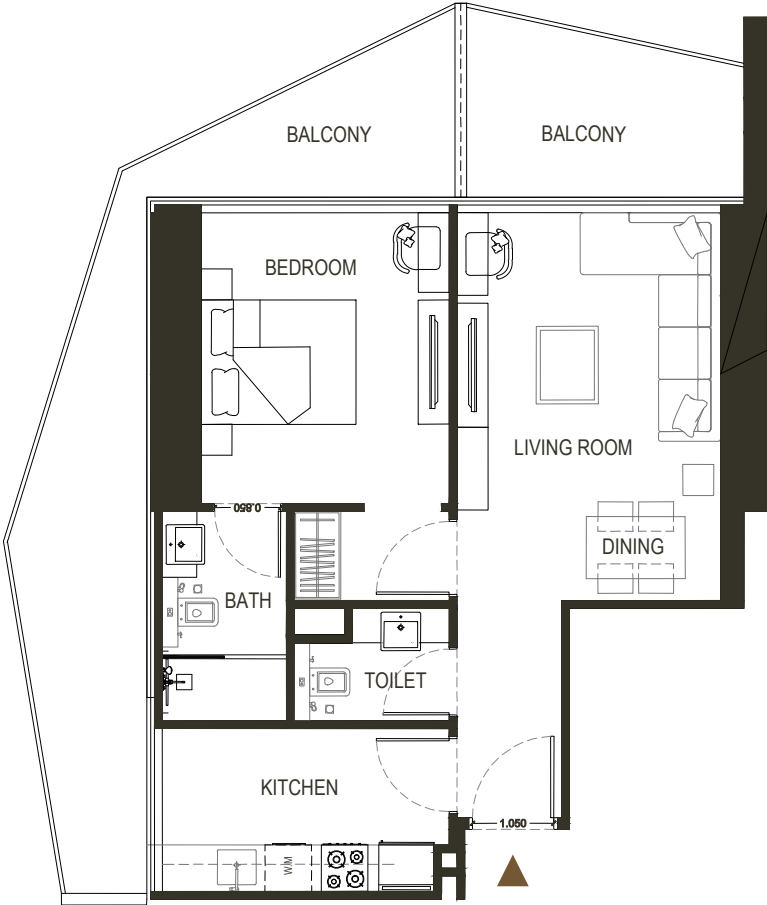
1 BEDROOM

TYPE - 2



| AREA | SQ.M | SQ.FT |
|-----------------|----------------------|------------------------|
| SUITE AREA | 54.43 m ² | 585.87 ft ² |
| BALCONY AREA | 27.65 m ² | 297.62 ft ² |
| TOTAL UNIT AREA | 82.08 m ² | 883.50 ft ² |

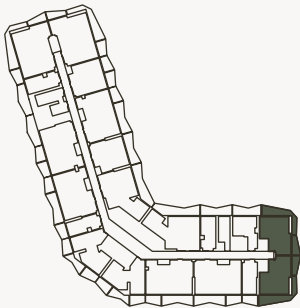
| FLAT DESIGN COMPONENTS | | |
|------------------------|-------------------|--|
| MASTER BATH | 4 m ² | |
| MASTER BEDROOM | 15 m ² | |
| LIVING | 17 m ² | |
| KITCHEN & DINING | 8 m ² | |
| W.C | 3 m ² | |
| CORRIDOR | 4 m ² | |



6. Calculation of suite area is measured as the area bounded by the centre line of demising or partition walls separating one unit from another unit, the exterior face of all exterior walls, and the exterior face of the corridor wall enclosing the adjoining unit. 7. Calculation of balcony area is measured as the area bounded by the centre line of demising or partition walls separating one unit from another unit, the outmost face of the enclosing guard and the external face of the adjoining balcony. 8. The units are measured at typical floor in the building. Columns may vary in size depending on the floor level. 9. For each unit type, unit sizes and details might be different and your sales and purchase agreement will contain the actual size of each specific unit.

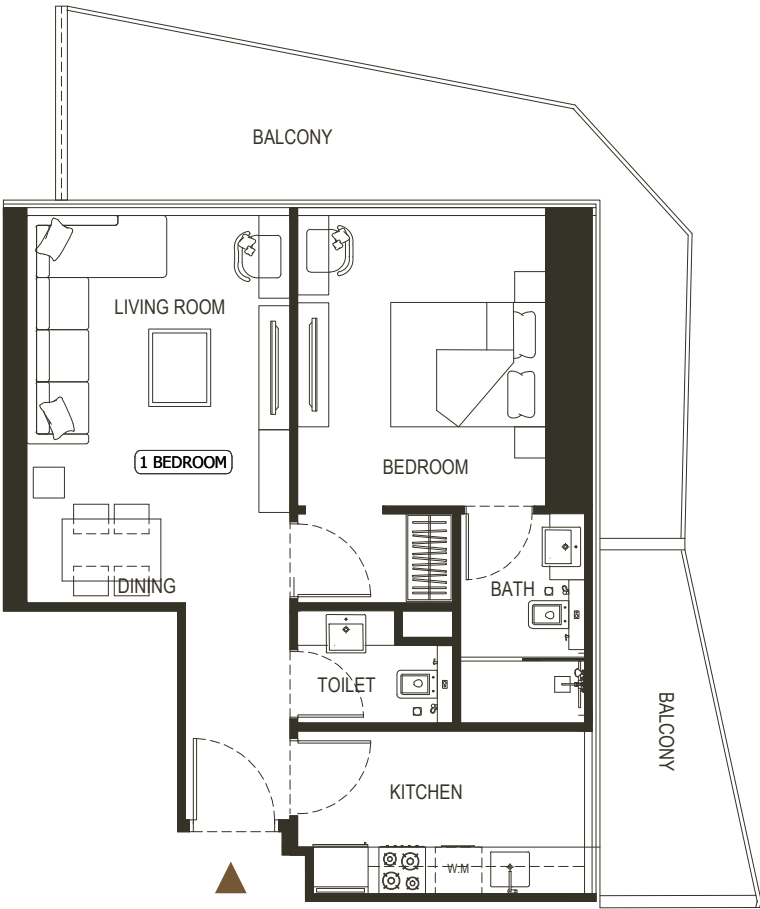
1 BEDROOM

TYPE - 3



| AREA | SQ.M | SQ.FT |
|-----------------|----------------------|------------------------|
| SUITE AREA | 56.87 m ² | 612.14 ft ² |
| BALCONY AREA | 28.85 m ² | 310.53 ft ² |
| TOTAL UNIT AREA | 85.72 m ² | 922.68 ft ² |

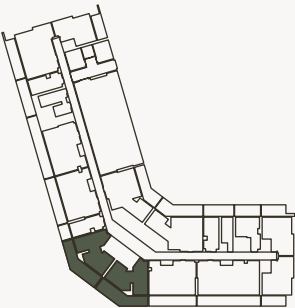
| FLAT DESIGN COMPONENTS | | |
|------------------------|-------------------|--|
| MASTER BATH | 4 m ² | |
| MASTER BEDROOM | 15 m ² | |
| LIVING | 15 m ² | |
| KITCHEN & DINING | 8 m ² | |
| W.C | 3 m ² | |
| CORRIDOR | 4 m ² | |



Disclaimer: 1. All stated dimensions and services whether in relation to the building, common areas or individual units are subject to government and local authority approvals. Final dimensions and services will be stated in your sales and purchase agreement 2. All room dimensions are measured to structural elements and exclude wall finishes and construction tolerances. 3. All dimensions have been provided by our consultant architects. 4. All materials, dimensions and drawings are approximate. Information is subject to change without notice. 5. Actual suite area may vary from the stated area. Drawings are not to scale. The Developer reserves the right to make any revisions whatsoever including for aesthetic purposes.

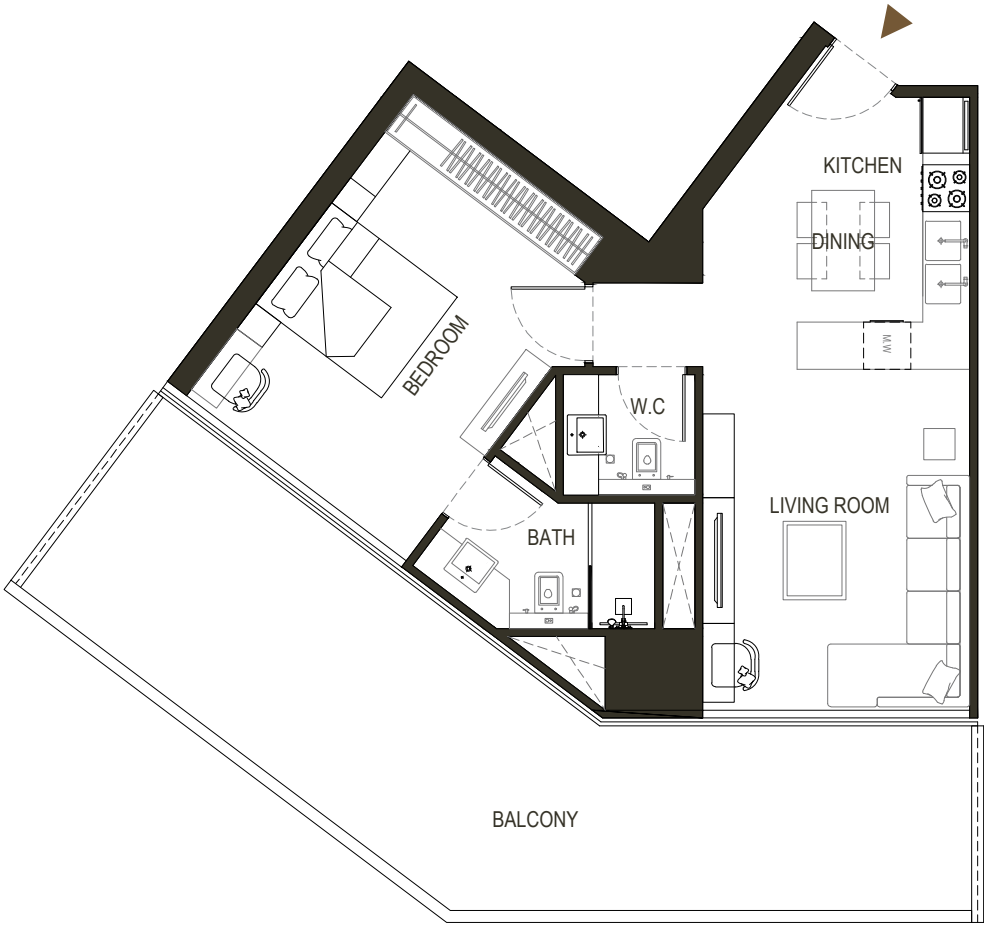
1 BEDROOM

TYPE - 4



| AREA | SQ.M | SQ.FT |
|-----------------|----------------------|------------------------|
| SUITE AREA | 61.22 m ² | 658.96 ft ² |
| BALCONY AREA | 36.70 m ² | 395.03 ft ² |
| TOTAL UNIT AREA | 97.92 m ² | 1054 ft ² |

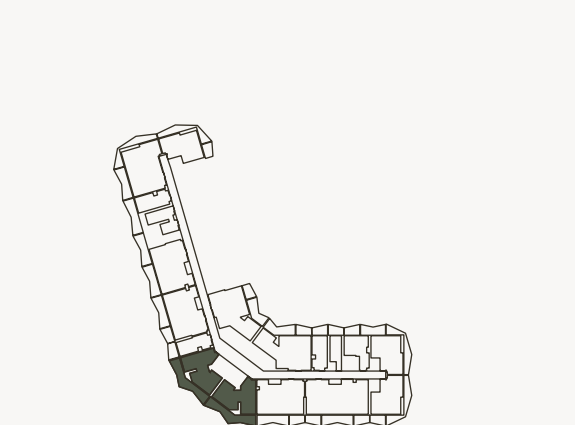
| FLAT DESIGN COMPONENTS | |
|------------------------|-------------------|
| MASTER BATH | 5 m ² |
| MASTER BEDROOM | 17 m ² |
| LIVING | 15 m ² |
| KITCHEN & DINING | 11 m ² |
| W.C | 3 m ² |
| CORRIDOR | 2 m ² |



6. Calculation of suite area is measured as the area bounded by the centre line of demising or partition walls separating one unit from another unit, the exterior face of all exterior walls, and the exterior face of the corridor wall enclosing the adjoining unit. 7. Calculation of balcony area is measured as the area bounded by the centre line of demising or partition walls separating one unit from another unit, the outmost face of the enclosing guard and the external face of the adjoining balcony. 8. The units are measured at typical floor in the building. Columns may vary in size depending on the floor level. 9. For each unit type, unit sizes and details might be different and your sales and purchase agreement will contain the actual size of each specific unit.

1 BEDROOM

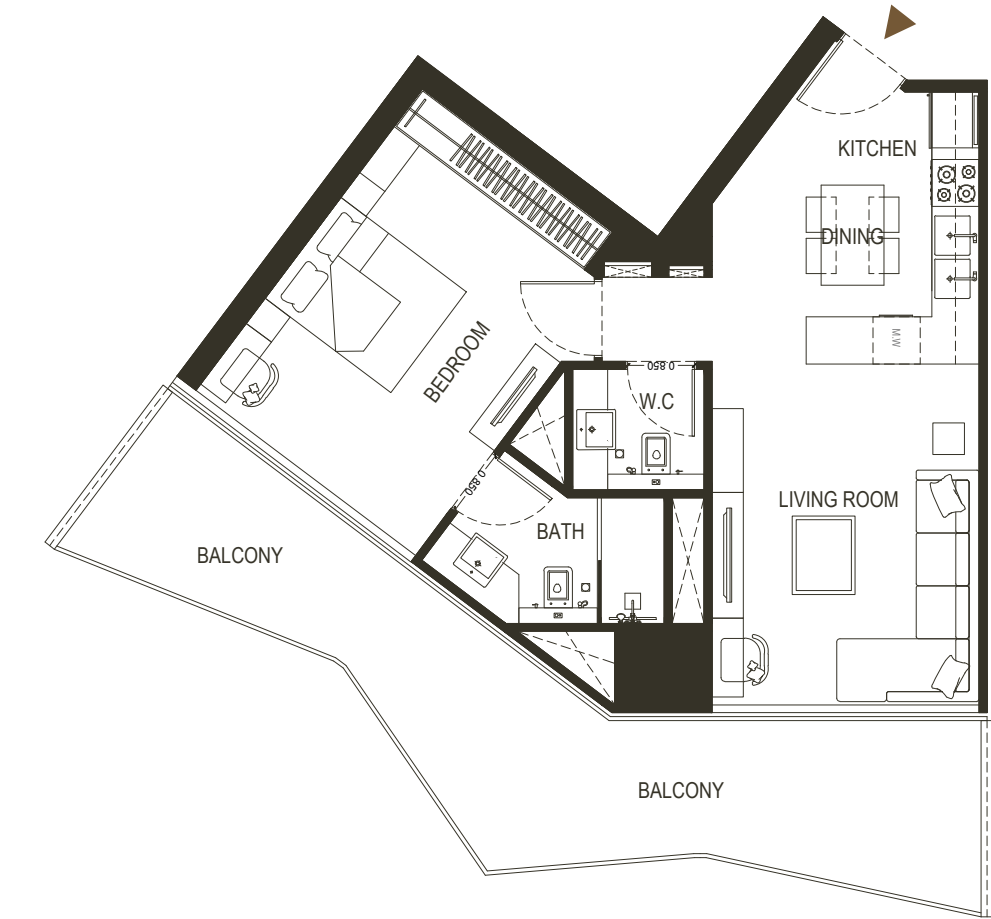
TYPE - 5



| AREA | SQ.M | SQ.FT |
|-----------------|----------|------------|
| SUITE AREA | 61.22 m² | 658.96 ft² |
| BALCONY AREA | 25.95 m² | 279.32 ft² |
| TOTAL UNIT AREA | 87.17 m² | 938.29 ft² |

FLAT DESIGN COMPONENTS

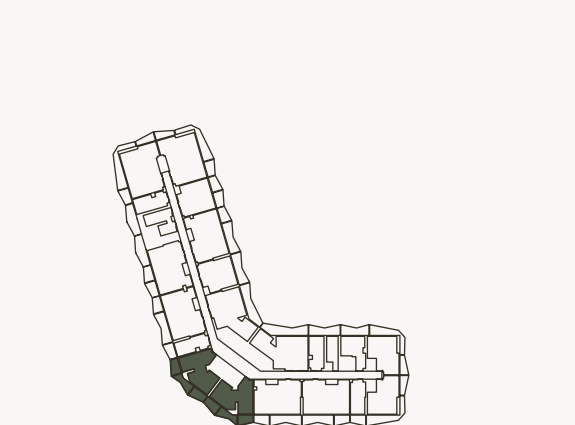
| | |
|------------------|-------|
| MASTER BATH | 5 m² |
| MASTER BEDROOM | 17 m² |
| LIVING | 15 m² |
| KITCHEN & DINING | 11 m² |
| W.C | 3 m² |
| CORRIDOR | 2 m² |



Disclaimer: 1. All stated dimensions and services whether in relation to the building, common areas or individual units are subject to government and local authority approvals. Final dimensions and services will be stated in your sales and purchase agreement 2. All room dimensions are measured to structural elements and exclude wall finishes and construction tolerances. 3. All dimensions have been provided by our consultant architects. 4. All materials, dimensions and drawings are approximate. Information is subject to change without notice. 5. Actual suite area may vary from the stated area. Drawings are not to scale. The Developer reserves the right to make any revisions whatsoever including for aesthetic purposes.

1 BEDROOM

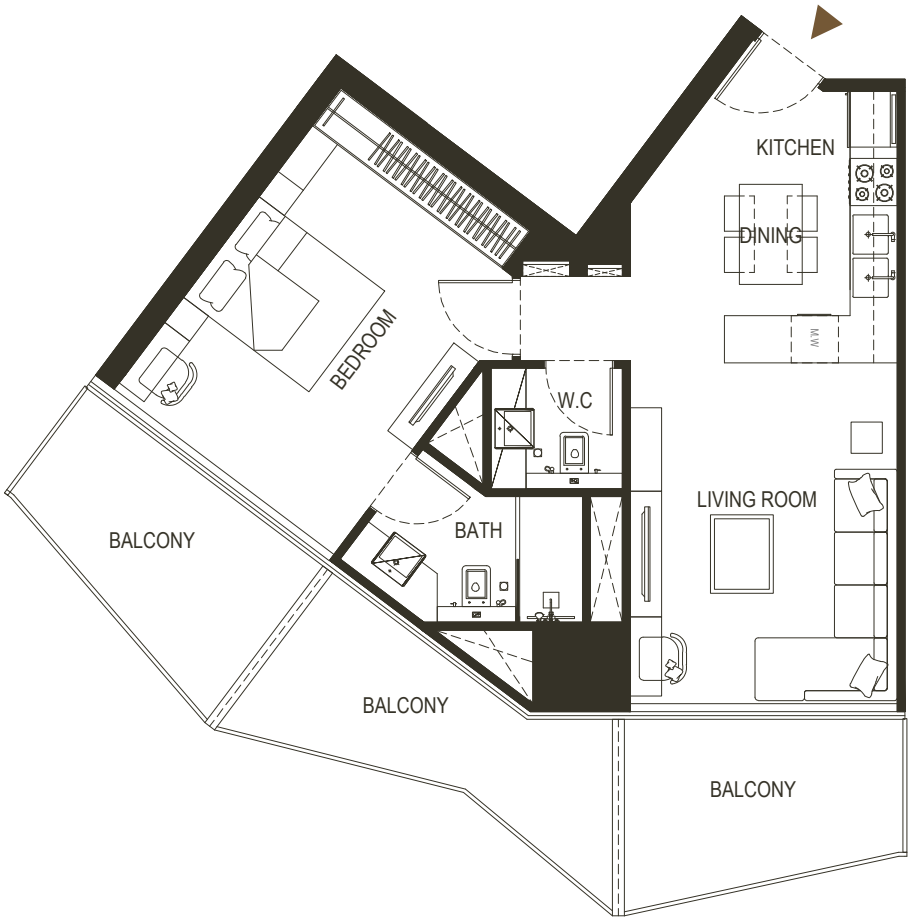
TYPE - 6



| AREA | SQ.M | SQ.FT |
|-----------------|----------|------------|
| SUITE AREA | 61.18 m² | 658.53 ft² |
| BALCONY AREA | 25.46 m² | 274.04 ft² |
| TOTAL UNIT AREA | 86.64 m² | 932.58 ft² |

FLAT DESIGN COMPONENTS

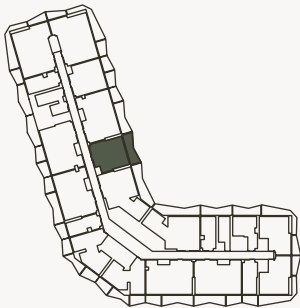
| | |
|------------------|-------|
| MASTER BATH | 5 m² |
| MASTER BEDROOM | 17 m² |
| LIVING | 15 m² |
| KITCHEN & DINING | 11 m² |
| W.C | 3 m² |
| CORRIDOR | 2 m² |



6. Calculation of suite area is measured as the area bounded by the centre line of demising or partition walls separating one unit from another unit, the exterior face of all exterior walls, and the exterior face of the corridor wall enclosing the adjoining unit. 7. Calculation of balcony area is measured as the area bounded by the centre line of demising or partition walls separating one unit from another unit, the outmost face of the enclosing guard and the external face of the adjoining balcony. 8. The units are measured at typical floor in the building. Columns may vary in size depending on the floor level. 9. For each unit type, unit sizes and details might be different and your sales and purchase agreement will contain the actual size of each specific unit.

1 BEDROOM

TYPE - 7

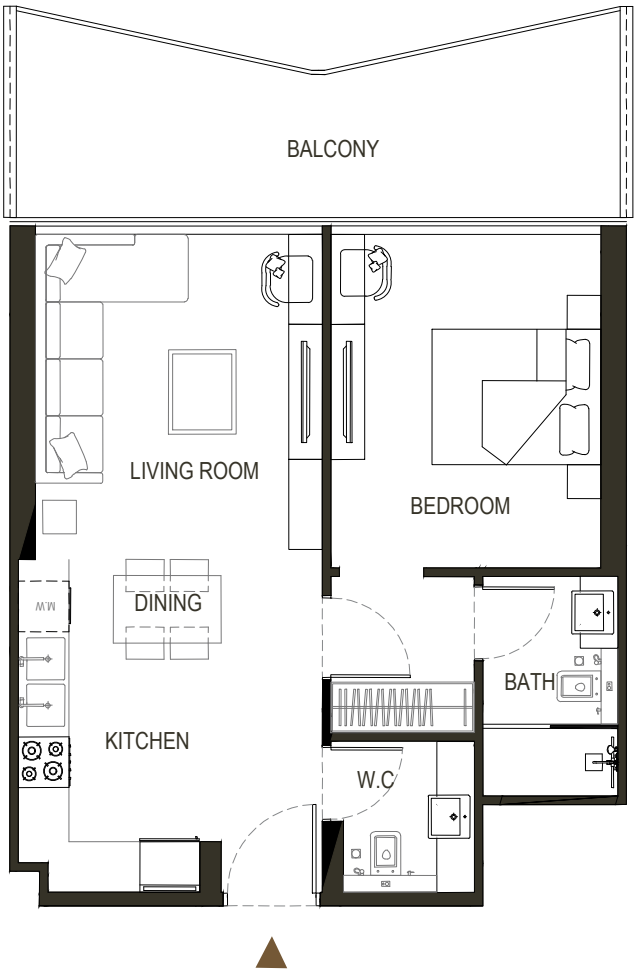


| AREA | SQ.M | SQ.FT |
|-----------------|----------|------------|
| | | |
| SUITE AREA | 56.33 m² | 606.33 ft² |
| BALCONY AREA | 15.67 m² | 168.67 ft² |
| TOTAL UNIT AREA | 72 m² | 775 ft² |

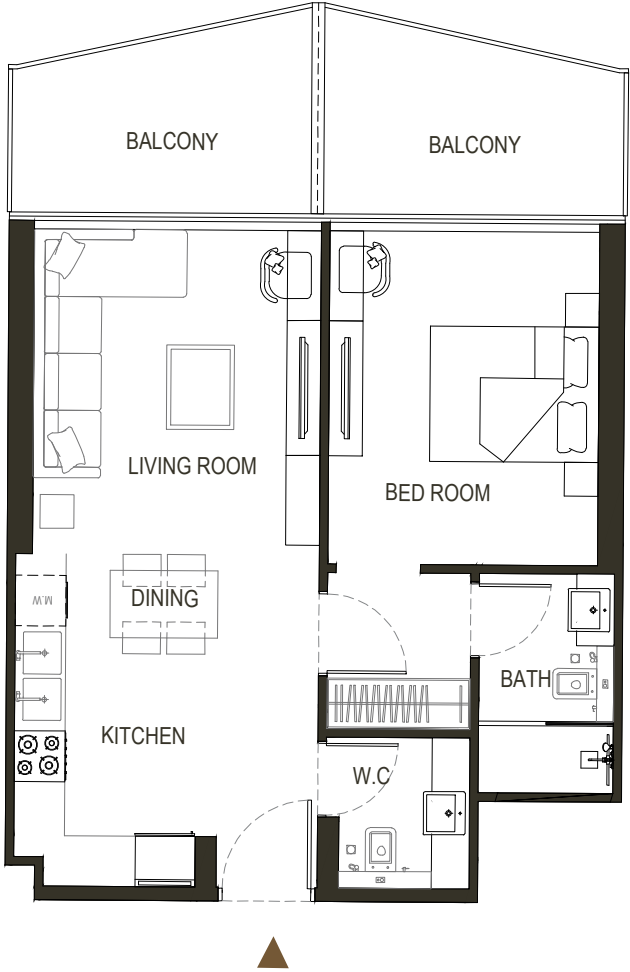
FLAT DESIGN COMPONENTS

| | |
|------------------|-------|
| MASTER BATH | 4 m² |
| MASTER BEDROOM | 16 m² |
| LIVING | 13 m² |
| KITCHEN & DINING | 9 m² |
| W.C | 3 m² |
| CORRIDOR | 5 m² |

Disclaimer: 1. All stated dimensions and services whether in relation to the building, common areas or individual units are subject to government and local authority approvals. Final dimensions and services will be stated in your sales and purchase agreement 2. All room dimensions are measured to structural elements and exclude wall finishes and construction tolerances. 3. All dimensions have been provided by our consultant architects. 4. All materials, dimensions and drawings are approximate. Information is subject to change without notice. 5. Actual suite area may vary from the stated area. Drawings are not to scale. The Developer reserves the right to make any revisions whatsoever including for aesthetic purposes.

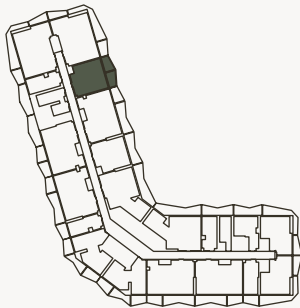


6. Calculation of suite area is measured as the area bounded by the centre line of demising or partition walls separating one unit from another unit, the exterior face of all exterior walls, and the exterior face of the corridor wall enclosing the adjoining unit. 7. Calculation of balcony area is measured as the area bounded by the centre line of demising or partition walls separating one unit from another unit, the outmost face of the enclosing guard and the external face of the adjoining balcony. 8. The units are measured at typical floor in the building. Columns may vary in size depending on the floor level. 9. For each unit type, unit sizes and details might be different and your sales and purchase agreement will contain the actual size of each specific unit.



1 BEDROOM

TYPE - 8



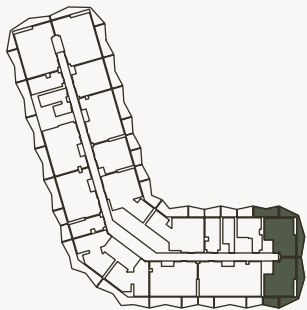
| AREA | SQ.M | SQ.FT |
|-----------------|----------|------------|
| | | |
| SUITE AREA | 56.33 m² | 606.33 ft² |
| BALCONY AREA | 15.67 m² | 168.67 ft² |
| TOTAL UNIT AREA | 72 m² | 775 ft² |

FLAT DESIGN COMPONENTS

| | |
|------------------|-------|
| MASTER BATH | 4 m² |
| MASTER BEDROOM | 16 m² |
| LIVING | 13 m² |
| KITCHEN & DINING | 9 m² |
| W.C | 3 m² |
| CORRIDOR | 5 m² |

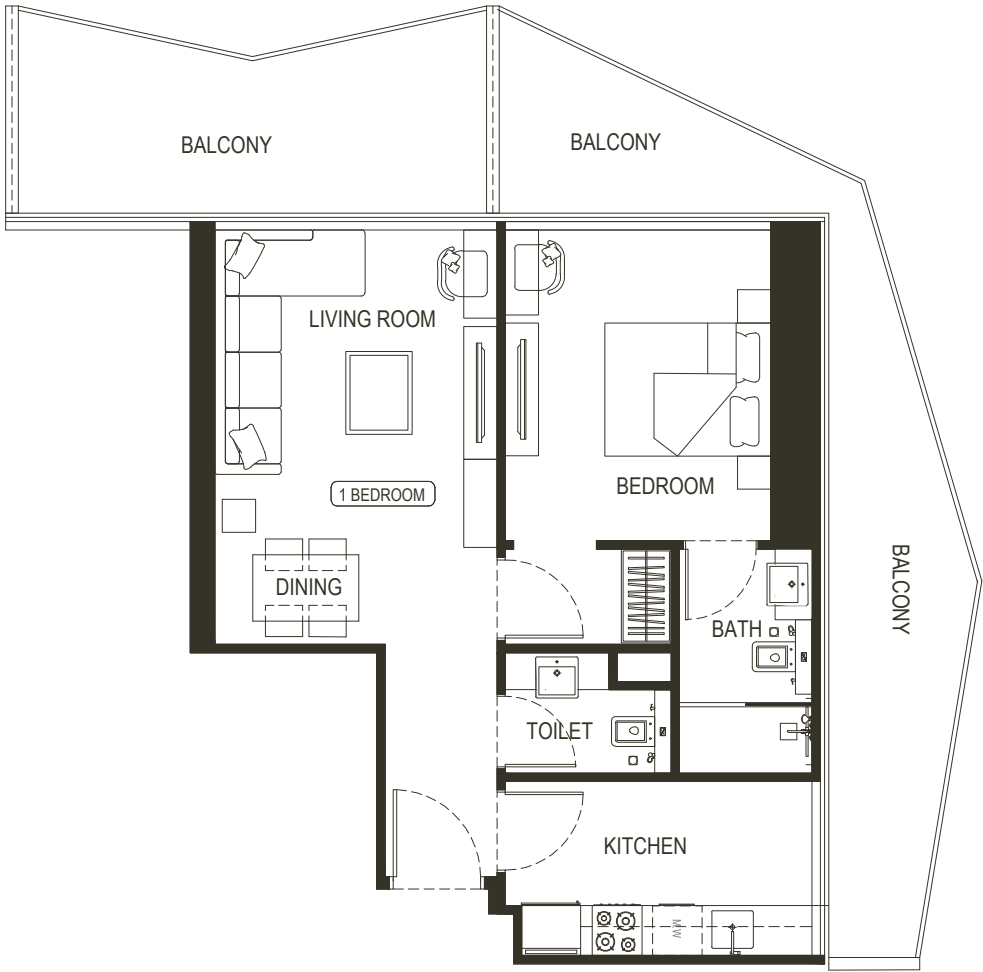
1 BEDROOM

TYPE - 9



| AREA | SQ.M | SQ.FT |
|-----------------|----------|------------|
| SUITE AREA | 56.87 m² | 612.14 ft² |
| BALCONY AREA | 28.12 m² | 302.68 ft² |
| TOTAL UNIT AREA | 84.99 m² | 914.82 ft² |

| FLAT DESIGN COMPONENTS | |
|------------------------|-------|
| MASTER BATH | 5 m² |
| MASTER BEDROOM | 15 m² |
| LIVING | 17 m² |
| KITCHEN & DINING | 8 m² |
| W.C | 3 m² |
| CORRIDOR | 4 m² |

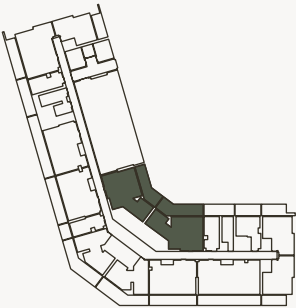


Disclaimer: 1. All stated dimensions and services whether in relation to the building, common areas or individual units are subject to government and local authority approvals. Final dimensions and services will be stated in your sales and purchase agreement 2. All room dimensions are measured to structural elements and exclude wall finishes and construction tolerances. 3. All dimensions have been provided by our consultant architects. 4. All materials, dimensions and drawings are approximate. Information is subject to change without notice. 5. Actual suite area may vary from the stated area. Drawings are not to scale. The Developer reserves the right to make any revisions whatsoever including for aesthetic purposes.



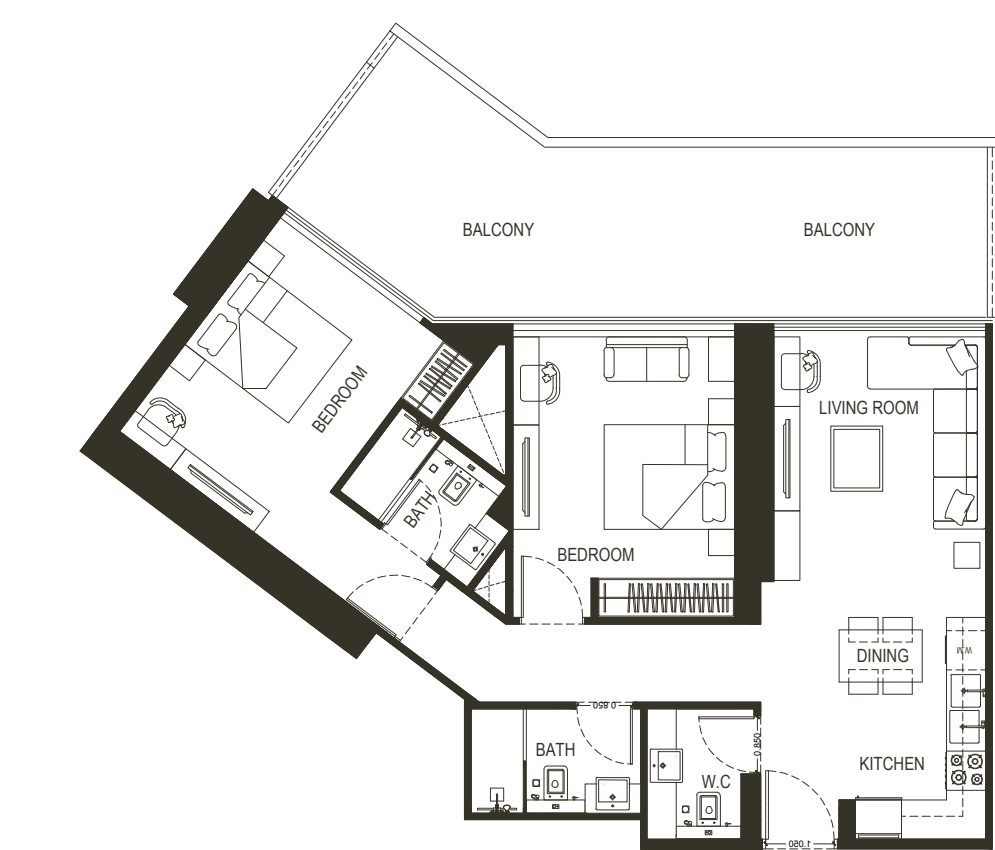
2 BEDROOM

TYPE - 1



| AREA | SQ.M | SQ.FT |
|-----------------|-----------|-------------|
| SUITE AREA | 85.76 m² | 923.11 ft² |
| BALCONY AREA | 31.23 m² | 336.16 ft² |
| TOTAL UNIT AREA | 116.99 m² | 1259.27 ft² |

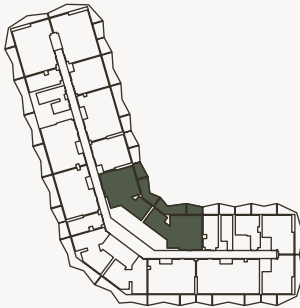
| FLAT DESIGN COMPONENTS | | |
|------------------------|-------|--|
| MASTER BATH | 4 m² | |
| MASTER BEDROOM | 16 m² | |
| LIVING | 14 m² | |
| KITCHEN & DINING | 12 m² | |
| BATH | 4 m² | |
| BEDROOM | 15 m² | |
| CORRIDOR | 7 m² | |
| W.C | 7 m² | |



Disclaimer: 1. All stated dimensions and services whether in relation to the building, common areas or individual units are subject to government and local authority approvals. Final dimensions and services will be stated in your sales and purchase agreement 2. All room dimensions are measured to structural elements and exclude wall finishes and construction tolerances. 3. All dimensions have been provided by our consultant architects. 4. All materials, dimensions and drawings are approximate. Information is subject to change without notice. 5. Actual suite area may vary from the stated area. Drawings are not to scale. The Developer reserves the right to make any revisions whatsoever including for aesthetic purposes.

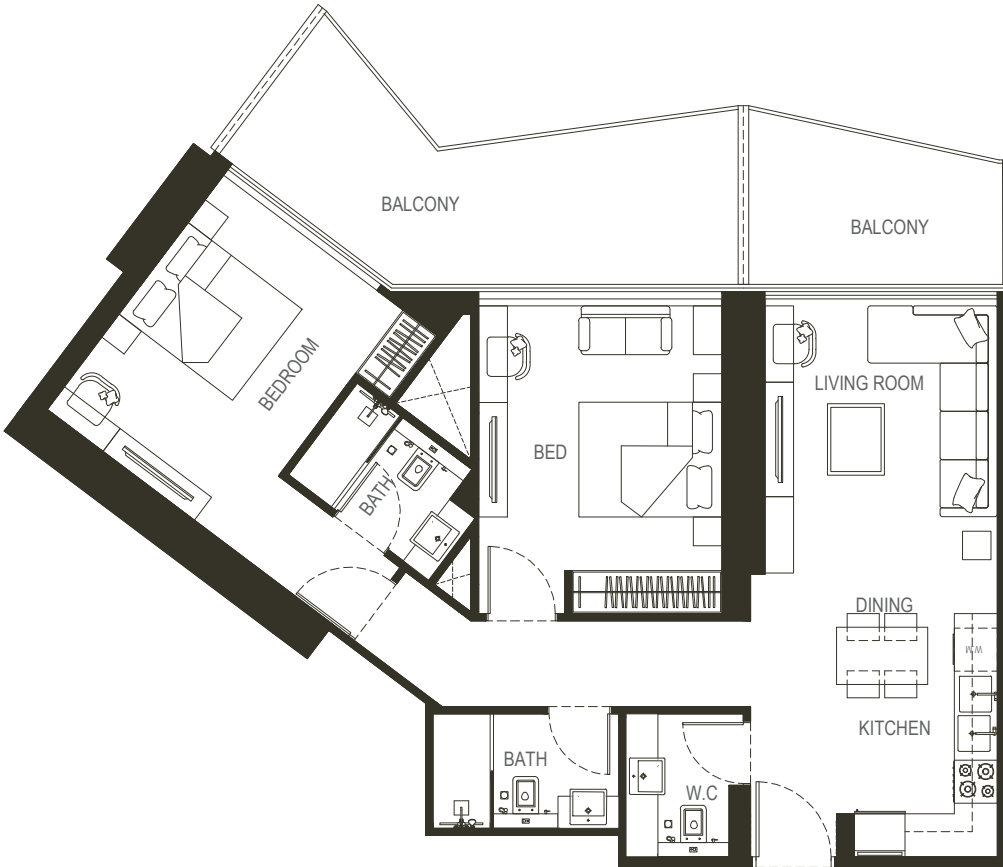
2 BEDROOM

TYPE - 2



| AREA | SQ.M | SQ.FT |
|-----------------|-----------|-------------|
| SUITE AREA | 85.57 m² | 921.07 ft² |
| BALCONY AREA | 24.91 m² | 268.13 ft² |
| TOTAL UNIT AREA | 110.48 m² | 1189.20 ft² |

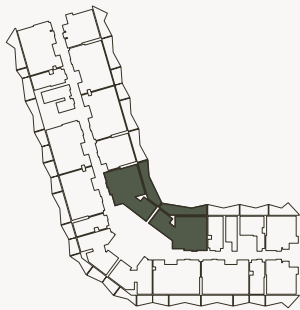
| FLAT DESIGN COMPONENTS | | |
|------------------------|-------|--|
| MASTER BATH | 4 m² | |
| MASTER BEDROOM | 16 m² | |
| LIVING | 14 m² | |
| KITCHEN & DINING | 12 m² | |
| BATH | 4 m² | |
| BEDROOM | 15 m² | |
| CORRIDOR | 7 m² | |
| W.C | 7 m² | |



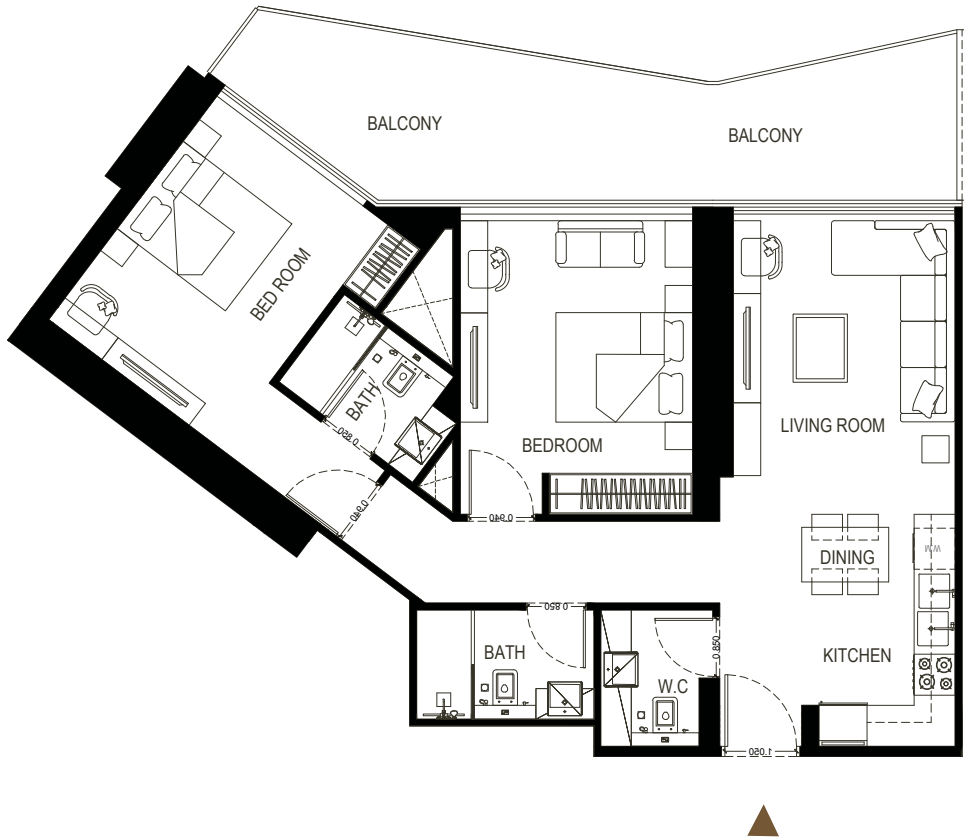
6. Calculation of suite area is measured as the area bounded by the centre line of demising or partition walls separating one unit from another unit, the exterior face of all exterior walls, and the exterior face of the corridor wall enclosing the adjoining unit. 7. Calculation of balcony area is measured as the area bounded by the centre line of demising or partition walls separating one unit from another unit, the outmost face of the enclosing guard and the external face of the adjoining balcony. 8. The units are measured at typical floor in the building. Columns may vary in size depending on the floor level. 9. For each unit type, unit sizes and details might be different and your sales and purchase agreement will contain the actual size of each specific unit.

2 BEDROOM

TYPE - 3



| AREA | SQ.M | SQ.FT |
|-----------------|-----------|-------------|
| SUITE AREA | 85.57 m² | 921.07 ft² |
| BALCONY AREA | 23.39 m² | 251.77 ft² |
| TOTAL UNIT AREA | 108.96 m² | 1172.84 ft² |

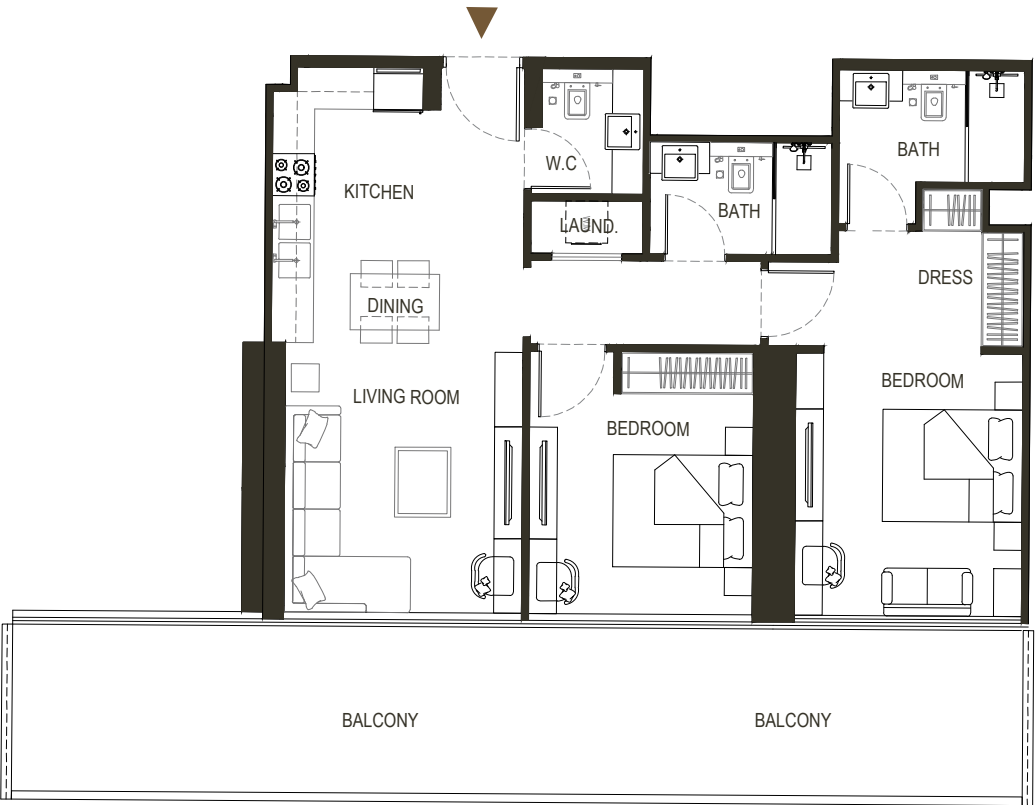
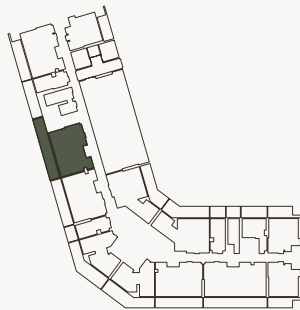


Disclaimer: 1. All stated dimensions and services whether in relation to the building, common areas or individual units are subject to government and local authority approvals. Final dimensions and services will be stated in your sales and purchase agreement 2. All room dimensions are measured to structural elements and exclude wall finishes and construction tolerances. 3. All dimensions have been provided by our consultant architects. 4. All materials, dimensions and drawings are approximate. Information is subject to change without notice. 5. Actual suite area may vary from the stated area. Drawings are not to scale. The Developer reserves the right to make any revisions whatsoever including for aesthetic purposes.

| FLAT DESIGN COMPONENTS | | |
|------------------------|-------|--|
| MASTER BATH | 4 m² | |
| MASTER BEDROOM | 16 m² | |
| LIVING | 14 m² | |
| KITCHEN & DINING | 12 m² | |
| BATH | 4 m² | |
| BEDROOM | 15 m² | |
| CORRIDOR | 7 m² | |
| W.C | 7 m² | |

2 BEDROOM

TYPE - 4



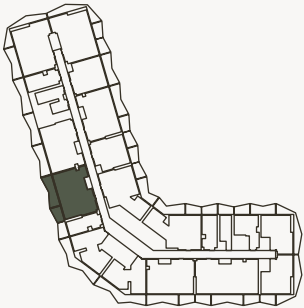
6. Calculation of suite area is measured as the area bounded by the centre line of demising or partition walls separating one unit from another unit, the exterior face of all exterior walls, and the exterior face of the corridor wall enclosing the adjoining unit. 7. Calculation of balcony area is measured as the area bounded by the centre line of demising or partition walls separating one unit from another unit, the outmost face of the enclosing guard and the external face of the adjoining balcony. 8. The units are measured at typical floor in the building. Columns may vary in size depending on the floor level. 9. For each unit type, unit sizes and details might be different and your sales and purchase agreement will contain the actual size of each specific unit.

| AREA | SQ.M | SQ.FT |
|-----------------|-----------|-------------|
| SUITE AREA | 84.31 m² | 907.50 ft² |
| BALCONY AREA | 41.68 m² | 448.63 ft² |
| TOTAL UNIT AREA | 111.82 m² | 1203.62 ft² |

| FLAT DESIGN COMPONENTS | | |
|------------------------|-------|--|
| MASTER BATH | 5 m² | |
| MASTER BEDROOM | 19 m² | |
| LIVING | 13 m² | |
| KITCHEN & DINING | 9 m² | |
| BATH | 4 m² | |
| BEDROOM | 12 m² | |
| CORRIDOR | 9 m² | |
| LAUNDRY | 1 m² | |
| W.C | 3 m² | |

2 BEDROOM

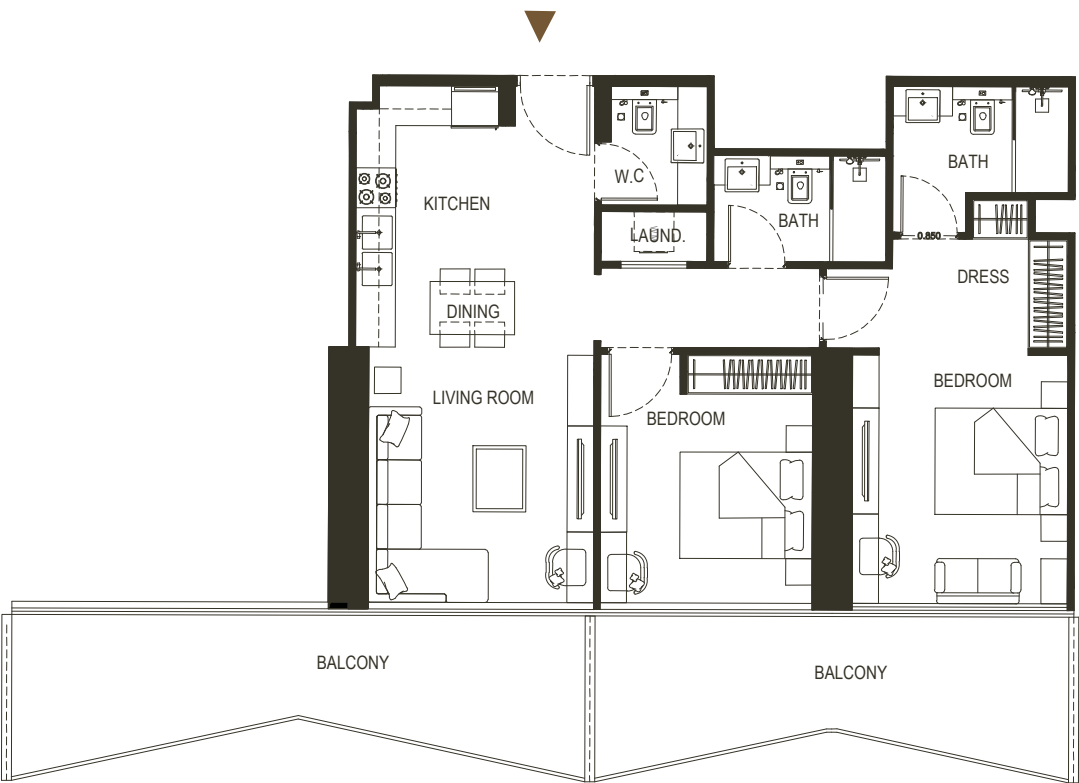
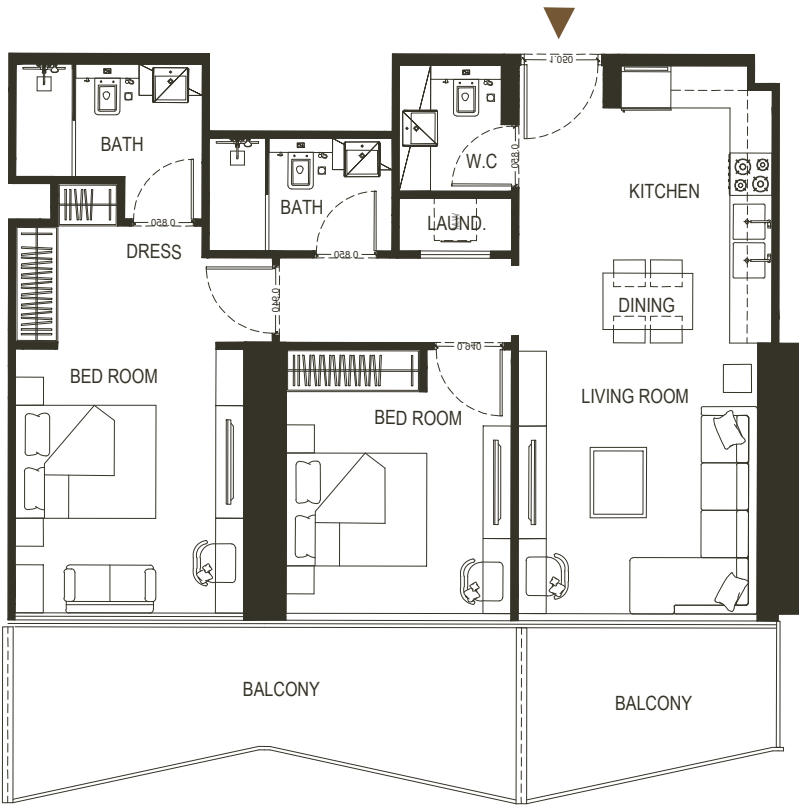
TYPE - 5



| AREA | SQ.M | SQ.FT |
|-----------------|-----------|-------------|
| SUITE AREA | 84.30 m² | 907.39 ft² |
| BALCONY AREA | 23.59 m² | 253.92 ft² |
| TOTAL UNIT AREA | 107.89 m² | 1161.31 ft² |

| FLAT DESIGN COMPONENTS | | |
|------------------------|-------|--|
| MASTER BATH | 5 m² | |
| MASTER BEDROOM | 19 m² | |
| LIVING | 13 m² | |
| KITCHEN & DINING | 9 m² | |
| BATH | 4 m² | |
| BEDROOM | 12 m² | |
| CORRIDOR | 9 m² | |
| LAUNDRY | 1 m² | |
| W.C | 3 m² | |

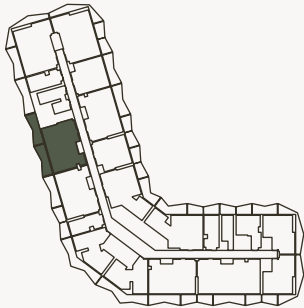
Disclaimer: 1. All stated dimensions and services whether in relation to the building, common areas or individual units are subject to government and local authority approvals. Final dimensions and services will be stated in your sales and purchase agreement 2. All room dimensions are measured to structural elements and exclude wall finishes and construction tolerances. 3. All dimensions have been provided by our consultant architects. 4. All materials, dimensions and drawings are approximate. Information is subject to change without notice. 5. Actual suite area may vary from the stated area. Drawings are not to scale. The Developer reserves the right to make any revisions whatsoever including for aesthetic purposes.



6. Calculation of suite area is measured as the area bounded by the centre line of demising or partition walls separating one unit from another unit, the exterior face of all exterior walls, and the exterior face of the corridor wall enclosing the adjoining unit. 7. Calculation of balcony area is measured as the area bounded by the centre line of demising or partition walls separating one unit from another unit, the outmost face of the enclosing guard and the external face of the adjoining balcony. 8. The units are measured at typical floor in the building. Columns may vary in size depending on the floor level. 9. For each unit type, unit sizes and details might be different and your sales and purchase agreement will contain the actual size of each specific unit.

2 BEDROOM

TYPE - 6

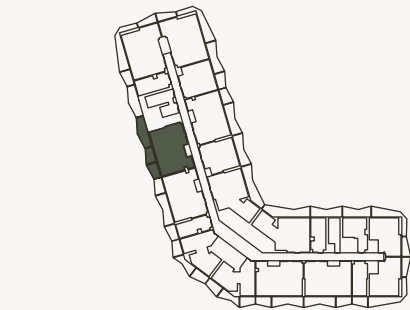


| AREA | SQ.M | SQ.FT |
|-----------------|-----------|-------------|
| SUITE AREA | 84.31 m² | 907.50 ft² |
| BALCONY AREA | 32.66 m² | 351.54 ft² |
| TOTAL UNIT AREA | 116.97 m² | 1259.05 ft² |

| FLAT DESIGN COMPONENTS | | |
|------------------------|-------|--|
| MASTER BATH | 5 m² | |
| MASTER BEDROOM | 19 m² | |
| LIVING | 13 m² | |
| KITCHEN & DINING | 9 m² | |
| BATH | 4 m² | |
| BEDROOM | 12 m² | |
| CORRIDOR | 9 m² | |
| LAUNDRY | 1 m² | |
| W.C | 3 m² | |

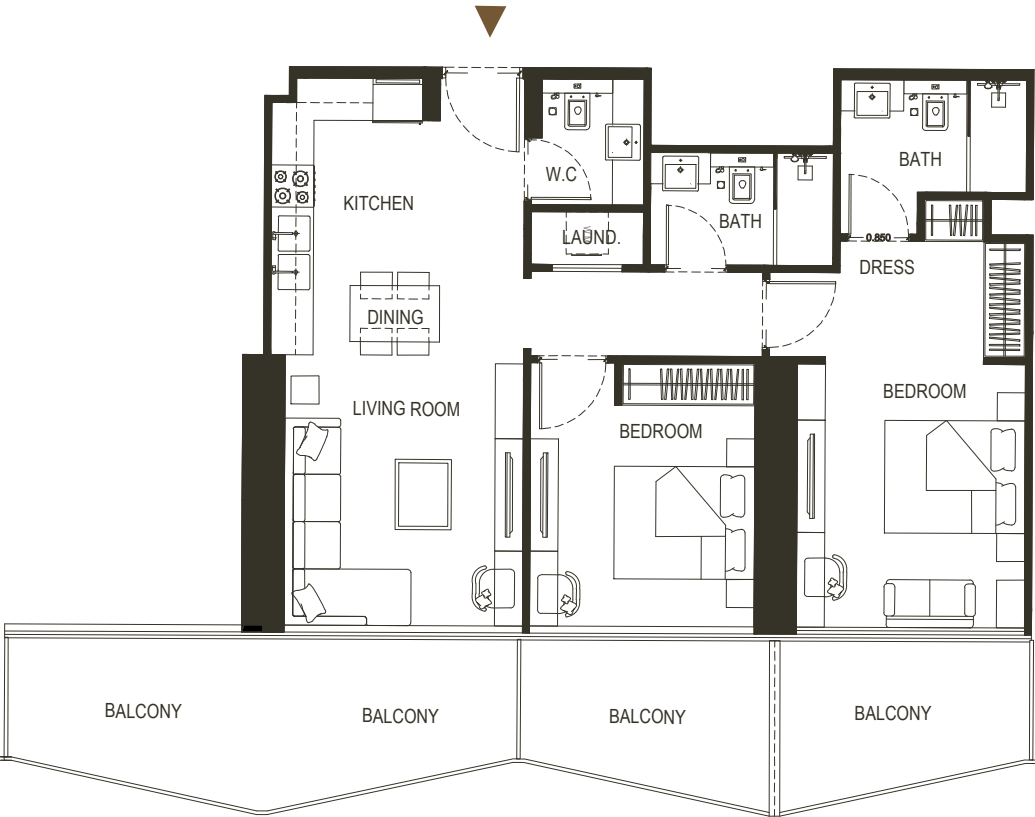
2 BEDROOM

TYPE - 7



| AREA | SQ.M | SQ.FT |
|-----------------|-----------------------|-------------------------|
| SUITE AREA | 84.31 m ² | 907.50 ft ² |
| BALCONY AREA | 32.54m ² | 350.25 ft ² |
| TOTAL UNIT AREA | 116.85 m ² | 1257.76 ft ² |

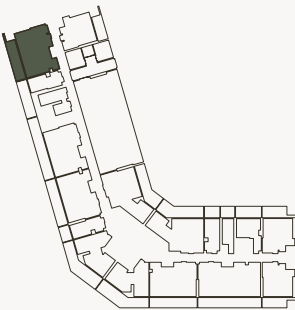
| FLAT DESIGN COMPONENTS | | |
|------------------------|-------------------|--|
| MASTER BATH | 5 m ² | |
| MASTER BEDROOM | 19 m ² | |
| LIVING | 13 m ² | |
| KITCHEN & DINING | 9 m ² | |
| BATH | 4 m ² | |
| BEDROOM | 12 m ² | |
| CORRIDOR | 9 m ² | |
| LAUNDRY | 1 m ² | |
| W.C | 3 m ² | |



Disclaimer: 1. All stated dimensions and services whether in relation to the building, common areas or individual units are subject to government and local authority approvals. Final dimensions and services will be stated in your sales and purchase agreement 2. All room dimensions are measured to structural elements and exclude wall finishes and construction tolerances. 3. All dimensions have been provided by our consultant architects. 4. All materials, dimensions and drawings are approximate. Information is subject to change without notice. 5. Actual suite area may vary from the stated area. Drawings are not to scale. The Developer reserves the right to make any revisions whatsoever including for aesthetic purposes.

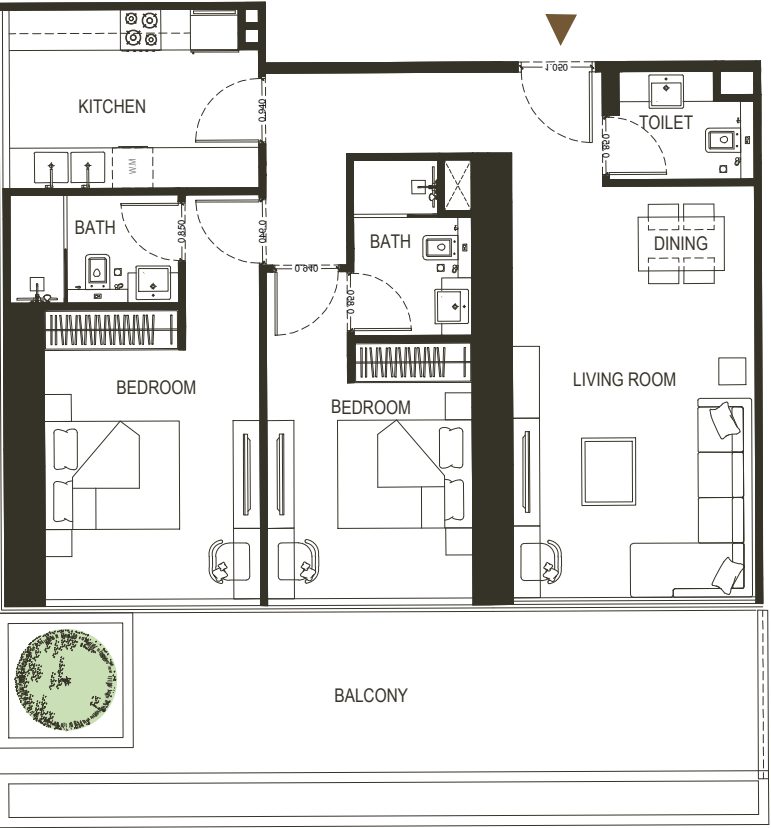
2 BEDROOM

TYPE - 8



| AREA | SQ.M | SQ.FT |
|-----------------|-----------------------|-------------------------|
| SUITE AREA | 85.15 m ² | 916 ft ² |
| BALCONY AREA | 28.34 m ² | 305.05 ft ² |
| TOTAL UNIT AREA | 113.49 m ² | 1221.60 ft ² |

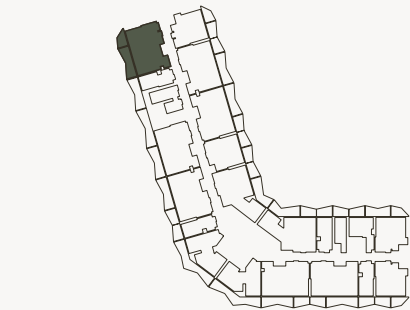
| FLAT DESIGN COMPONENTS | | |
|------------------------|-------------------|--|
| MASTER BATH | 5 m ² | |
| MASTER BEDROOM | 19 m ² | |
| LIVING | 13 m ² | |
| KITCHEN & DINING | 9 m ² | |
| BATH | 4 m ² | |
| BEDROOM | 12 m ² | |
| CORRIDOR | 9 m ² | |
| LAUNDRY | 1 m ² | |
| W.C | 3 m ² | |



6. Calculation of suite area is measured as the area bounded by the centre line of demising or partition walls separating one unit from another unit, the exterior face of all exterior walls, and the exterior face of the corridor wall enclosing the adjoining unit. 7. Calculation of balcony area is measured as the area bounded by the centre line of demising or partition walls separating one unit from another unit, the outmost face of the enclosing guard and the external face of the adjoining balcony. 8. The units are measured at typical floor in the building. Columns may vary in size depending on the floor level. 9. For each unit type, unit sizes and details might be different and your sales and purchase agreement will contain the actual size of each specific unit.

2 BEDROOM

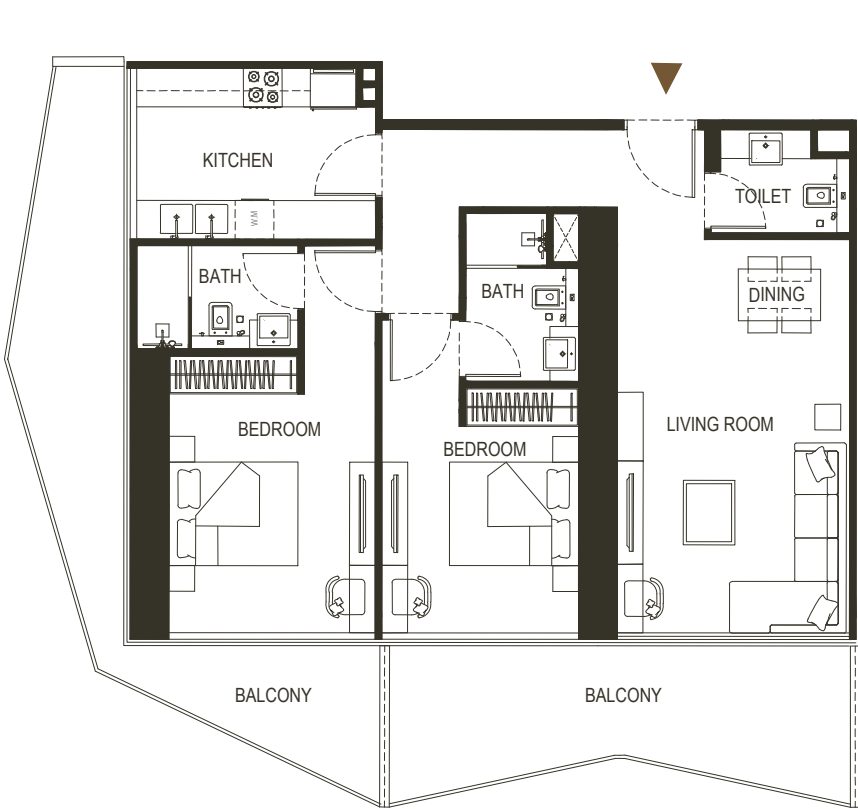
TYPE - 9



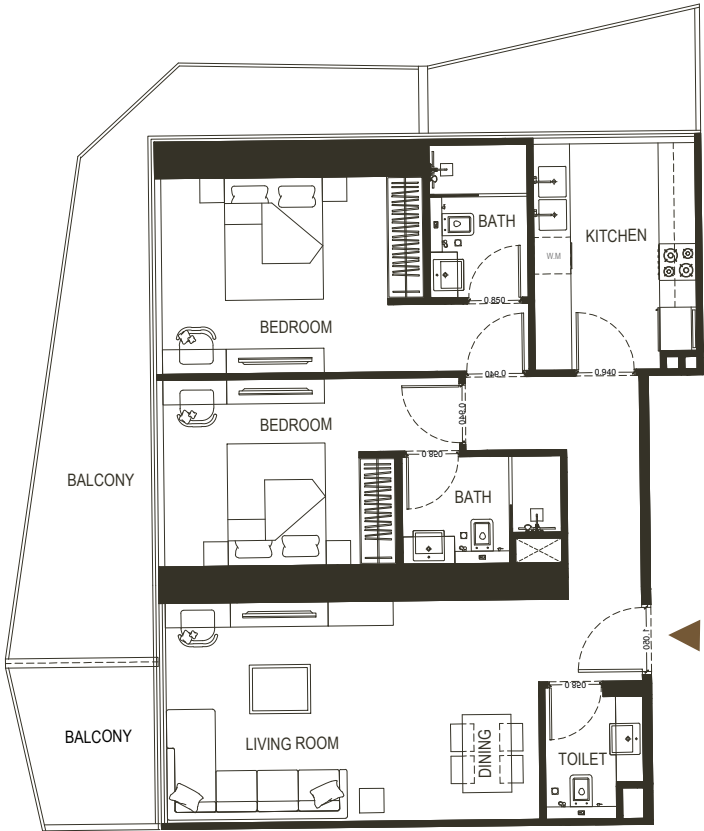
| AREA | SQ.M | SQ.FT |
|-----------------|-----------------------|-------------------------|
| | | |
| SUITE AREA | 91.53 m ² | 985.22 ft ² |
| BALCONY AREA | 36.51 m ² | 392.22 ft ² |
| TOTAL UNIT AREA | 128.04 m ² | 1378.21 ft ² |

| FLAT DESIGN COMPONENTS | | |
|------------------------|-------------------|--|
| | | |
| MASTER BATH | 4 m ² | |
| MASTER BEDROOM | 16 m ² | |
| LIVING | 23 m ² | |
| KITCHEN & DINING | 10 m ² | |
| BATH | 4 m ² | |
| BEDROOM | 13 m ² | |
| CORRIDOR | 8 m ² | |
| W.C | 3 m ² | |

Disclaimer: 1. All stated dimensions and services whether in relation to the building, common areas or individual units are subject to government and local authority approvals. Final dimensions and services will be stated in your sales and purchase agreement 2. All room dimensions are measured to structural elements and exclude wall finishes and construction tolerances. 3. All dimensions have been provided by our consultant architects. 4. All materials, dimensions and drawings are approximate. Information is subject to change without notice. 5. Actual suite area may vary from the stated area. Drawings are not to scale. The Developer reserves the right to make any revisions whatsoever including for aesthetic purposes.

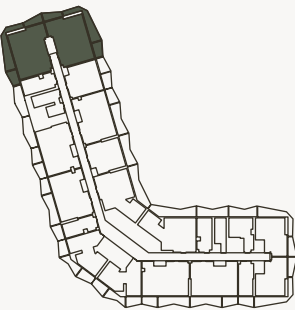


6. Calculation of suite area is measured as the area bounded by the centre line of demising or partition walls separating one unit from another unit, the exterior face of all exterior walls, and the exterior face of the corridor wall enclosing the adjoining unit. 7. Calculation of balcony area is measured as the area bounded by the centre line of demising or partition walls separating one unit from another unit, the outmost face of the enclosing guard and the external face of the adjoining balcony. 8. The units are measured at typical floor in the building. Columns may vary in size depending on the floor level. 9. For each unit type, unit sizes and details might be different and your sales and purchase agreement will contain the actual size of each specific unit.



2 BEDROOM

TYPE - 10

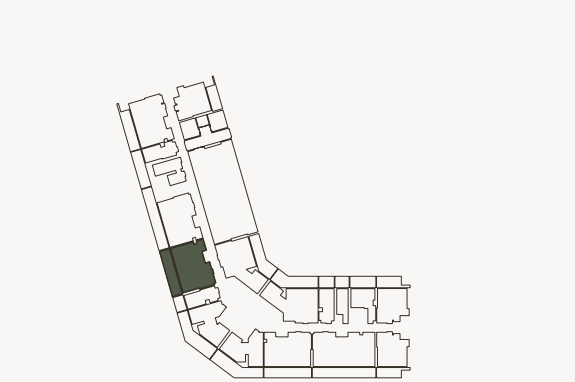


| AREA | SQ.M | SQ.FT |
|-----------------|-----------------------|-------------------------|
| | | |
| SUITE AREA | 91.80 m ² | 988.12 ft ² |
| BALCONY AREA | 36.68 m ² | 394.82 ft ² |
| TOTAL UNIT AREA | 128.48 m ² | 1382.94 ft ² |

| FLAT DESIGN COMPONENTS | | |
|------------------------|-------------------|--|
| | | |
| MASTER BATH | 4 m ² | |
| MASTER BEDROOM | 16 m ² | |
| LIVING & DINING | 23 m ² | |
| KITCHEN | 10 m ² | |
| BATH | 4 m ² | |
| BEDROOM | 13 m ² | |
| CORRIDOR | 8 m ² | |
| W.C | 3 m ² | |

2 BEDROOM

TYPE - 11



| AREA | SQ.M | SQ.FT |
|-----------------|-----------|-------------|
| SUITE AREA | 84.30 m² | 907.40 ft² |
| BALCONY AREA | 27.52 m² | 296.22 ft² |
| TOTAL UNIT AREA | 111.82 m² | 1203.62 ft² |

FLAT DESIGN COMPONENTS

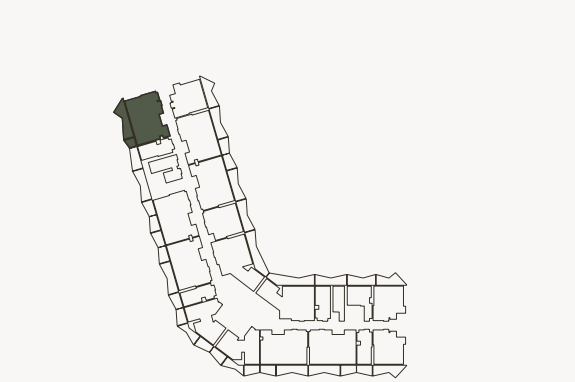
| | |
|------------------|-------|
| MASTER BATH | 5 m² |
| MASTER BEDROOM | 19 m² |
| LIVING | 13 m² |
| KITCHEN & DINING | 9 m² |
| BATH | 4 m² |
| BEDROOM | 12 m² |
| CORRIDOR | 9 m² |
| LAUNDRY | 1 m² |
| W.C | 3 m² |



Disclaimer: 1. All stated dimensions and services whether in relation to the building, common areas or individual units are subject to government and local authority approvals. Final dimensions and services will be stated in your sales and purchase agreement 2. All room dimensions are measured to structural elements and exclude wall finishes and construction tolerances. 3. All dimensions have been provided by our consultant architects. 4. All materials, dimensions and drawings are approximate. Information is subject to change without notice. 5. Actual suite area may vary from the stated area. Drawings are not to scale. The Developer reserves the right to make any revisions whatsoever including for aesthetic purposes.

2 BEDROOM

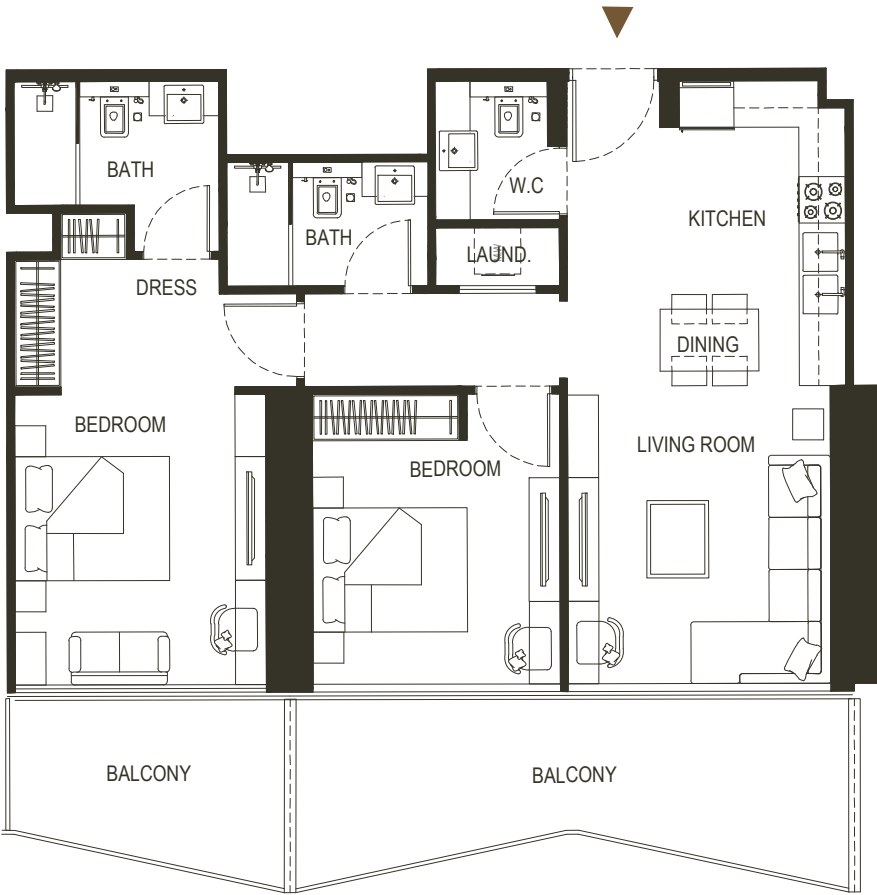
TYPE - 12



| AREA | SQ.M | SQ.FT |
|-----------------|-----------|-------------|
| SUITE AREA | 84.30 m² | 907.39 ft² |
| BALCONY AREA | 23.53m² | 253.27 ft² |
| TOTAL UNIT AREA | 107.83 m² | 1160.67 ft² |

FLAT DESIGN COMPONENTS

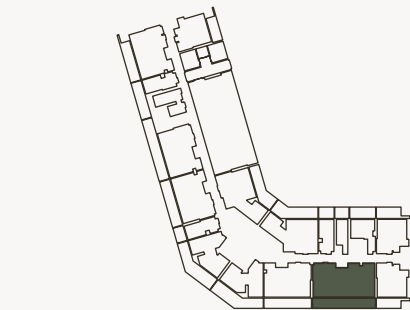
| | |
|------------------|-------|
| MASTER BATH | 5 m² |
| MASTER BEDROOM | 19 m² |
| LIVING | 13 m² |
| KITCHEN & DINING | 9 m² |
| BATH | 4 m² |
| BEDROOM | 12 m² |
| CORRIDOR | 9 m² |
| LAUNDRY | 1 m² |
| W.C | 3 m² |



6. Calculation of suite area is measured as the area bounded by the centre line of demising or partition walls separating one unit from another unit, the exterior face of all exterior walls, and the exterior face of the corridor wall enclosing the adjoining unit. 7. Calculation of balcony area is measured as the area bounded by the centre line of demising or partition walls separating one unit from another unit, the outmost face of the enclosing guard and the external face of the adjoining balcony. 8. The units are measured at typical floor in the building. Columns may vary in size depending on the floor level. 9. For each unit type, unit sizes and details might be different and your sales and purchase agreement will contain the actual size of each specific unit.

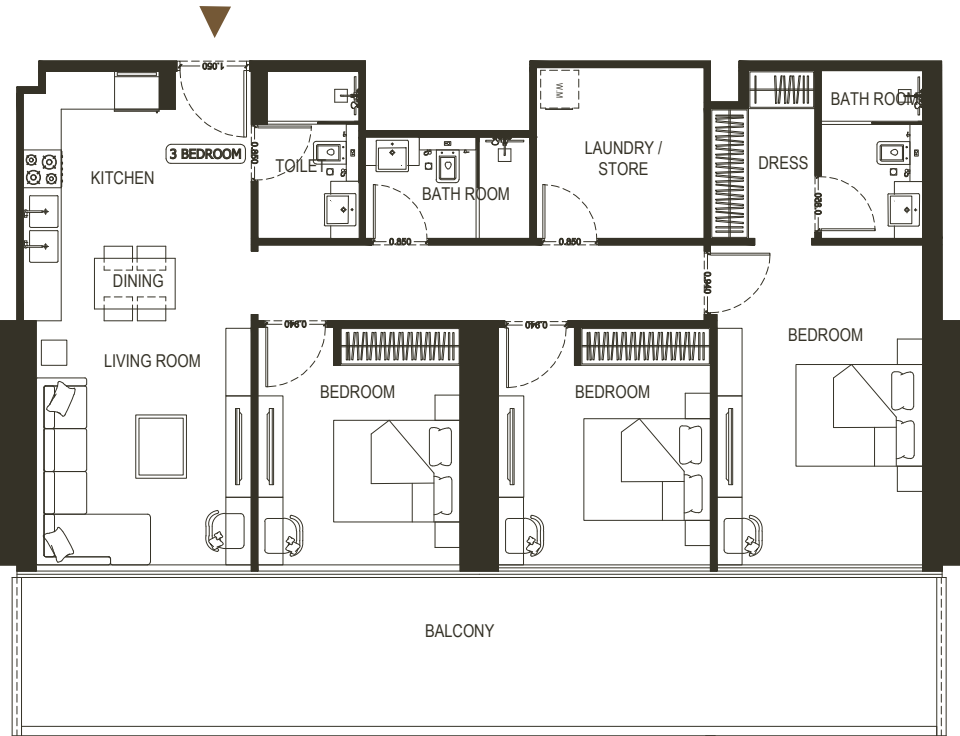
3 BEDROOM

TYPE - 1



| AREA | SQ.M | SQ.FT |
|-----------------|-----------------------|-------------------------|
| SUITE AREA | 113.10 m ² | 1217.40 ft ² |
| BALCONY AREA | 36.31 m ² | 390.84 ft ² |
| TOTAL UNIT AREA | 149.41 m ² | 1608.24 ft ² |

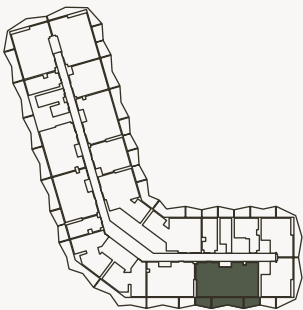
| FLAT DESIGN COMPONENTS | | |
|------------------------|-------------------|--|
| MASTER BATH | 4 m ² | |
| MASTER BEDROOM | 21 m ² | |
| LIVING | 13 m ² | |
| KITCHEN & DINING | 14 m ² | |
| BATH | 4 m ² | |
| BEDROOM | 12 m ² | |
| BEDROOM | 13 m ² | |
| CORRIDOR | 9 m ² | |
| TOILET | 4 m ² | |
| LAUNDRY / STORE | 7 m ² | |



Disclaimer: 1. All stated dimensions and services whether in relation to the building, common areas or individual units are subject to government and local authority approvals. Final dimensions and services will be stated in your sales and purchase agreement 2. All room dimensions are measured to structural elements and exclude wall finishes and construction tolerances. 3. All dimensions have been provided by our consultant architects. 4. All materials, dimensions and drawings are approximate. Information is subject to change without notice. 5. Actual suite area may vary from the stated area. Drawings are not to scale. The Developer reserves the right to make any revisions whatsoever including for aesthetic purposes.

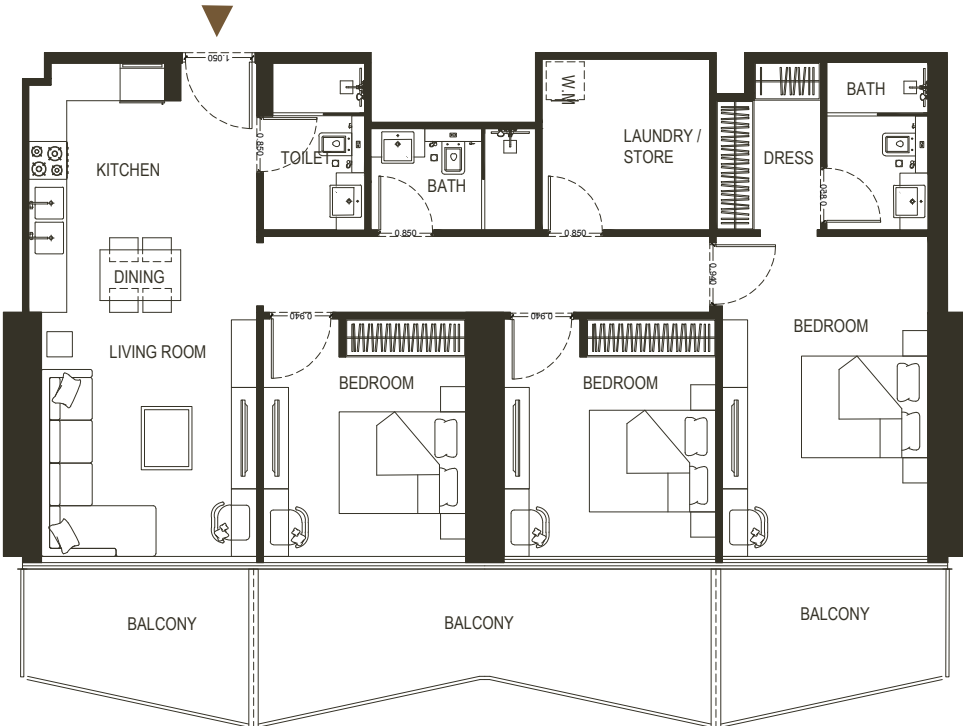
3 BEDROOM

TYPE - 2



| AREA | SQ.M | SQ.FT |
|-----------------|-----------------------|-------------------------|
| SUITE AREA | 113.18 m ² | 1218.25 ft ² |
| BALCONY AREA | 31.53 m ² | 339.38 ft ² |
| TOTAL UNIT AREA | 144.71 m ² | 1557.64 ft ² |

| FLAT DESIGN COMPONENTS | | |
|------------------------|-------------------|--|
| MASTER BATH | 4 m ² | |
| MASTER BEDROOM | 21 m ² | |
| LIVING | 13 m ² | |
| KITCHEN & DINING | 14 m ² | |
| BATH | 4 m ² | |
| BEDROOM | 12 m ² | |
| BEDROOM | 13 m ² | |
| CORRIDOR | 9 m ² | |
| TOILET | 4 m ² | |
| LAUNDRY / STORE | 7 m ² | |

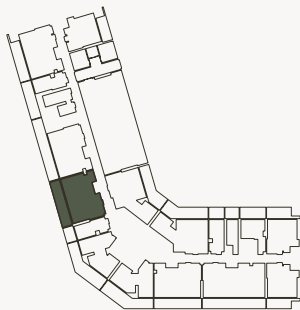


6. Calculation of suite area is measured as the area bounded by the centre line of demising or partition walls separating one unit from another unit, the exterior face of all exterior walls, and the exterior face of the corridor wall enclosing the adjoining unit. 7. Calculation of balcony area is measured as the area bounded by the centre line of demising or partition walls separating one unit from another unit, the outmost face of the enclosing guard and the external face of the adjoining balcony. 8. The units are measured at typical floor in the building. Columns may vary in size depending on the floor level. 9. For each unit type, unit sizes and details might be different and your sales and purchase agreement will contain the actual size of each specific unit.

FLOOR PLAN

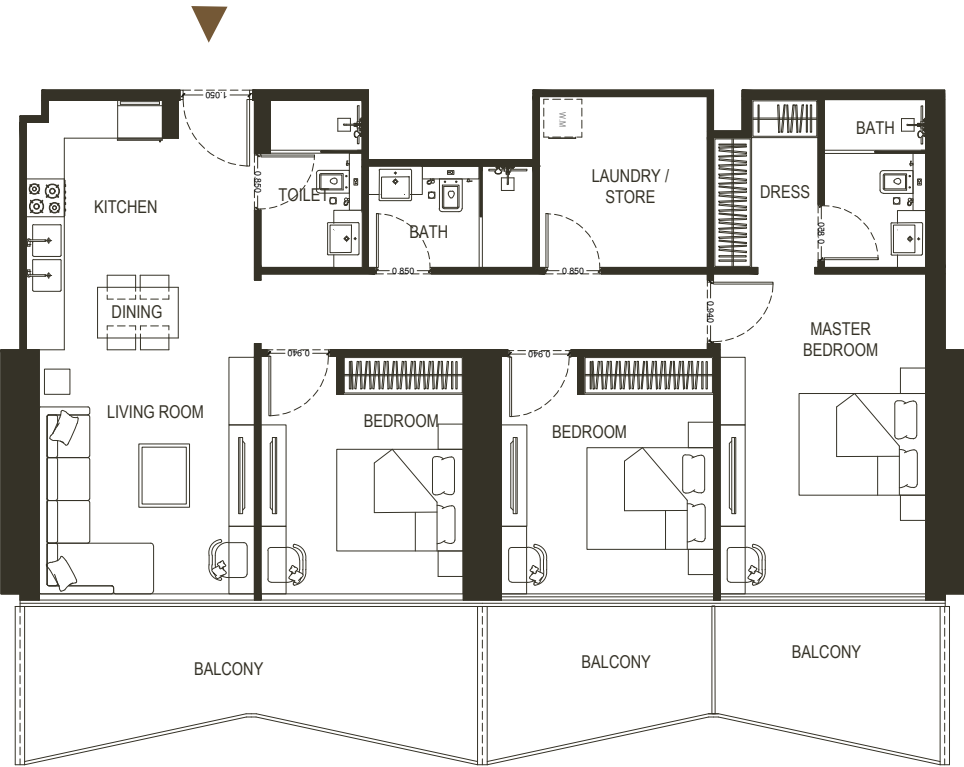
3 BEDROOM

TYPE - 3



| AREA | SQ.M | SQ.FT |
|-----------------|-----------------------|-------------------------|
| SUITE AREA | 113.18 m ² | 1218.25 ft ² |
| BALCONY AREA | 31.52 m ² | 339.28 ft ² |
| TOTAL UNIT AREA | 144.70 m ² | 1557.53 ft ² |

| FLAT DESIGN COMPONENTS | | |
|------------------------|--|-------------------|
| MASTER BATH | | 4 m ² |
| MASTER BEDROOM | | 21 m ² |
| LIVING | | 13 m ² |
| KITCHEN & DINING | | 14 m ² |
| BATH | | 4 m ² |
| BEDROOM | | 12 m ² |
| BEDROOM | | 13 m ² |
| CORRIDOR | | 9 m ² |
| TOILET | | 4 m ² |
| LAUNDRY / STORE | | 7 m ² |



Disclaimer: 1. All stated dimensions and services whether in relation to the building, common areas or individual units are subject to government and local authority approvals. Final dimensions and services will be stated in your sales and purchase agreement 2. All room dimensions are measured to structural elements and exclude wall finishes and construction tolerances. 3. All dimensions have been provided by our consultant architects. 4. All materials, dimensions and drawings are approximate. Information is subject to change without notice. 5. Actual suite area may vary from the stated area. Drawings are not to scale. The Developer reserves the right to make any revisions whatsoever including for aesthetic purposes.









BINGHATTI HAVEN

FOR MORE INFORMATION PLEASE CONTACT



STAY AHEAD, INVEST SMART

 +971 55 476 7630
 +971 4 368 7878
 info@afsrealestate.com
 www.afsrealestate.com



POSSIBILITIES ARE LIMITLESS

 +971 50 674 2020
 +971 4 397 7731
 info@dubricks.com
 www.dubricks.com

